

# Standard Profile Tray | 2-Sided



## PRODUCT FEATURES

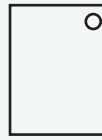
- 65mm Sill Height with 30mm Upstand
- Heavy Duty Reinforced Fiberglass Construction
- Anti-Slip Acrylic
- 10 Year Warranty

## CONFIGURATIONS

### WASTE TYPES

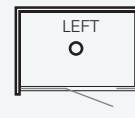


Centre

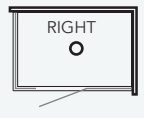


Offset

### TRAY ORIENTATION

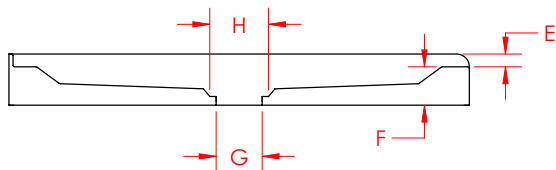
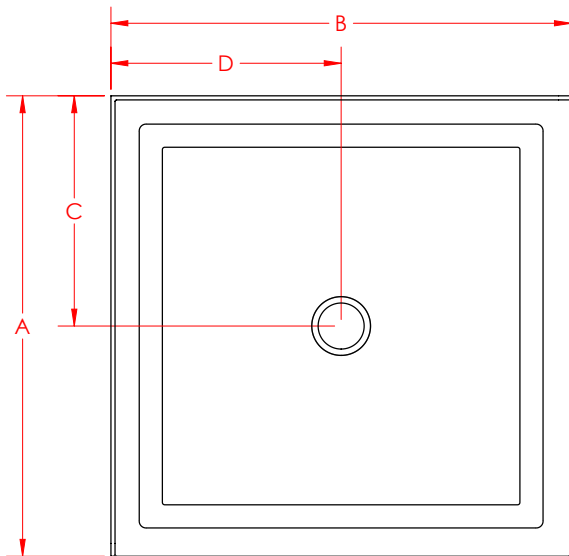


LEFT



RIGHT

## SPECIFICATIONS



	A	B	C	D	E	F	G	H
900x750 LH	750	900	375	450	25	65	90	115
900x750 RH	750	900	375	450	25	65	90	115

	A	B	C	D	E	F	G	H
900x900 Centre	900	900	450	450	25	65	90	115
900x900 Offset	900	900	150	150	25	65	90	115

	A	B	C	D	E	F	G	H
1000x1000 Centre	1000	1000	500	500	25	65	90	115
1000x1000 Offset	1000	1000	150	150	25	65	90	115

	A	B	C	D	E	F	G	H
1200x900 LH	900	1200	450	600	25	65	90	115
1200x900 RH	900	1200	450	600	25	65	90	115

### DESCRIPTION:

Newline acrylic shower trays are made using heavy duty reinforced fiberglass acrylic. Standard profile trays are 65mm high featuring a 30mm upstand. When installed, the wall lining comes down over the upstand, forming a waterproof seal with no visible silicone in the shower.

Low profile trays are designed with a sill height of 40mm and an upstand of 40mm. These trays feature the AquaCheck™ technology across the top of the tray upstand that combines to provide an anti-capillary gap. There is no provision for water tension to elevate the liquid up behind the acrylic liner.

Newline acrylic trays are suitable for use in 2-Sided, Alcove, Curved and Neo shower enclosures. They are available in a range of standard sizes from 750x750mm up to 1500x915mm.

### CONTRIBUTIONS TO COMPLIANCE

E3.3.2 and 3.3.5 and 3:3.6: Newline acrylic trays are designed with adequate fall to dispose of water through the waste outlet. Made from easy clean, sanitary acrylic, standard profile trays feature a 30mm upstand, over which the liner protrudes to form a waterproof seal. Low profile trays feature the AquaCheck technology, sealing the top of the tray upstand to provide an anti-capillary gap. There is no provision for water tension to elevate the liquid up behind the acrylic liner.

B2.3.1 (c) (i) and (ii) and B2.3.2 (b): Newline Acrylic Trays have a warranted durability of 10 years when maintenance standards are adhered to. Trays are installed as components of a building system and can be replaced without removing building elements that have greater durability. Refer to installation guides and Aftercare Document for further information.

G1.1 (a) and G1.3.2: Newline Acrylic Trays are made from easy clean, anti-slip acrylic. Regular cleaning routines to maintain hygienic standards are outlined in Aftercare and Maintenance document. Trays require adequate disposal via waste outlets, refer to installation manual for further information.

### SCOPE OF USE

Newline Acrylic Trays are intended for use in the following environments:

- Newline Acrylic Shower Trays are intended for use in the following environments: Domestic and commercial bathrooms, including homes, government housing, hotels, apartments.
- Suitable for use with cold and hot water.
- Used on a level floor surface prepared as per installation instructions.

### WARNINGS AND BANS

This product is not subject to warning or bans under section 26 of the Building Act 2004.

### CONTACT DETAILS

Location: NZ for Local and Imported Products

Legal and Trading Name of Manufacturer: Newline Group Ltd

Importer Address for Service: 54 Unutoto Place, Tauranga, 3171

Importer Website: [newline.nz](http://newline.nz)

Importer Email: [info@newline.co.nz](mailto:info@newline.co.nz)

Importer Phone Number: 0508 NEWLINE

### CONDITIONS OF USE

- Newline acrylic trays are intended for use under regulated water temperature that does not exceed 55 degrees Celsius.
- Must be installed in accordance with Newline Acrylic Wall and Tray Installation Manual.
- Cleaning products including bleaches, solvents, alcohol, citrus based chemicals, bath oils, and/or any abrasive cleaner shouldn't be used. Full list is outlined in Aftercare Document.
- Should be installed by an experienced shower installer or tradesman to ensure best outcome.

### SUPPORTING DOCUMENTATION

The following additional documentation supports the above statements:

[Aftercare and Maintenance Doc](#)

[Warranty Information](#)

Acrylic Tray Instruction Manual

[Low Profile](#)

[Standard Profile](#)