



## **Important!**

1. When you receive your Lugano Bath Screen package please check for any freight damage.
2. If damage has occurred advise your supplier within 8 hours.
3. Do not install any faulty product as this will invalidate later claims.

## LUGANO BATH SCREEN INSTALLATION

### INTRODUCTORY

Thank you for selecting a quality Stein Bathroomware Product.

### HEALTH AND SAFETY

- The glass requires two people to handle.
- Always stand glass up after unpacking the components and use soft packing when in contact with hard surfaces. Take care not to strike an edge or corner on a hard surface.
- All glass is toughened and cannot be reworked or drilled.
- Wear protective gloves and eye protection.
- Special care should be taken when drilling walls to avoid hidden pipes or electrical cables.

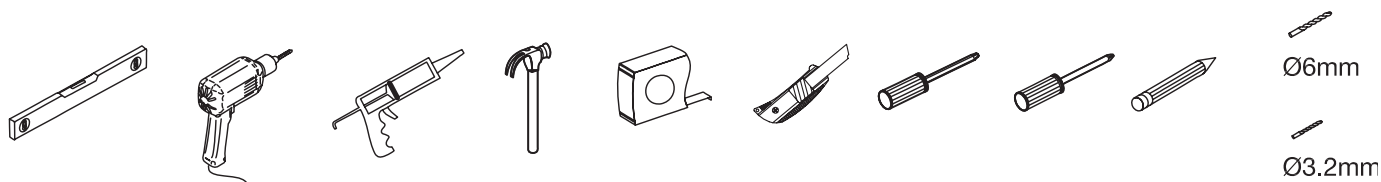
### WARRANTY

- This covers product defects: bath screen 5 years, working parts 2 years and PVC seals 1 year.
- Installation must comply with instructions to be under warranty.
- Damage or breakage on site is not covered in warranty.

### MATERIALS REQUIRED

Sika Silaflex NG Silicone (Translucent) - Cleaning materials and Methylated Spirits (from retailer).

### TOOLS REQUIRED

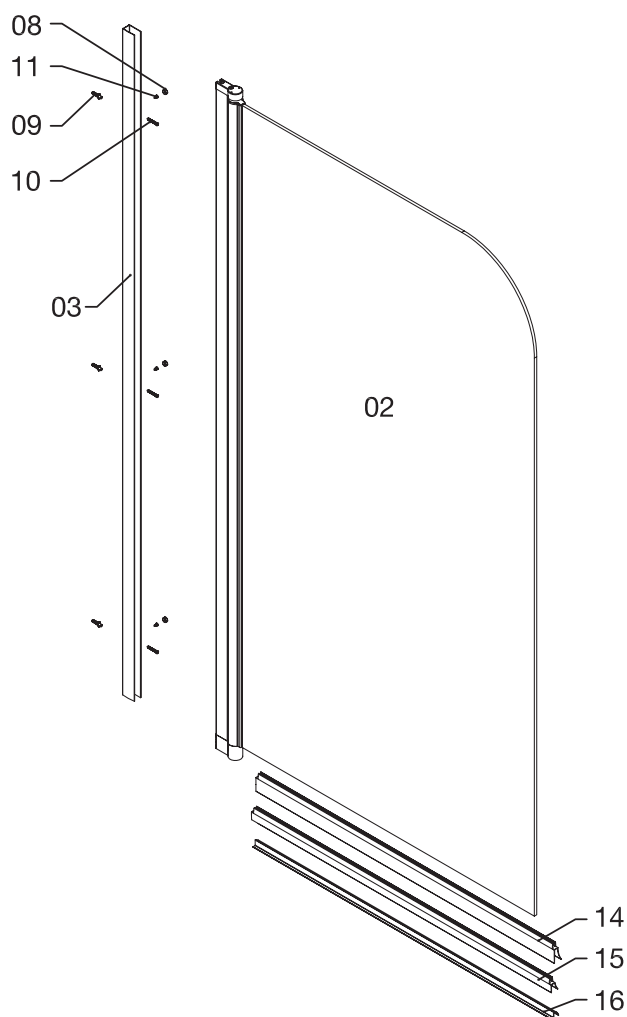


**BEFORE YOU START:** Read the instructions to understand the scope of the install.

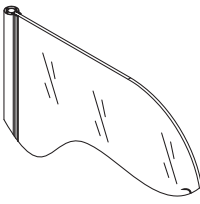
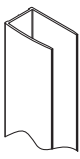

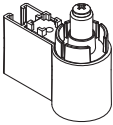
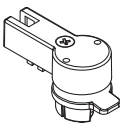






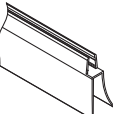
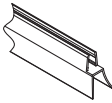
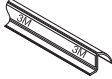
- This swinging glass panel is adaptable to suit bath lips up to 30mm in height. This is achieved with 3 seals in the kit to cover the variable heights (page 7).
- Solid fixing to the wall is advised. Bath Lip design governs the positioning of wall channel. View item D on page 4 for stud position. To cover variables, install stud with 90mm face crosswise.
- The wall needs to be plumb and the bath level for a satisfactory installation. Any variations will need to be identified along with planning to overcome this.

**WE RECOMMEND A TRADESMAN FAMILIAR WITH THIS TYPE OF INSTALLATION**

# INSTALLATION



Items designated with an Asterisk (★) are already assembled in this Bath Screen

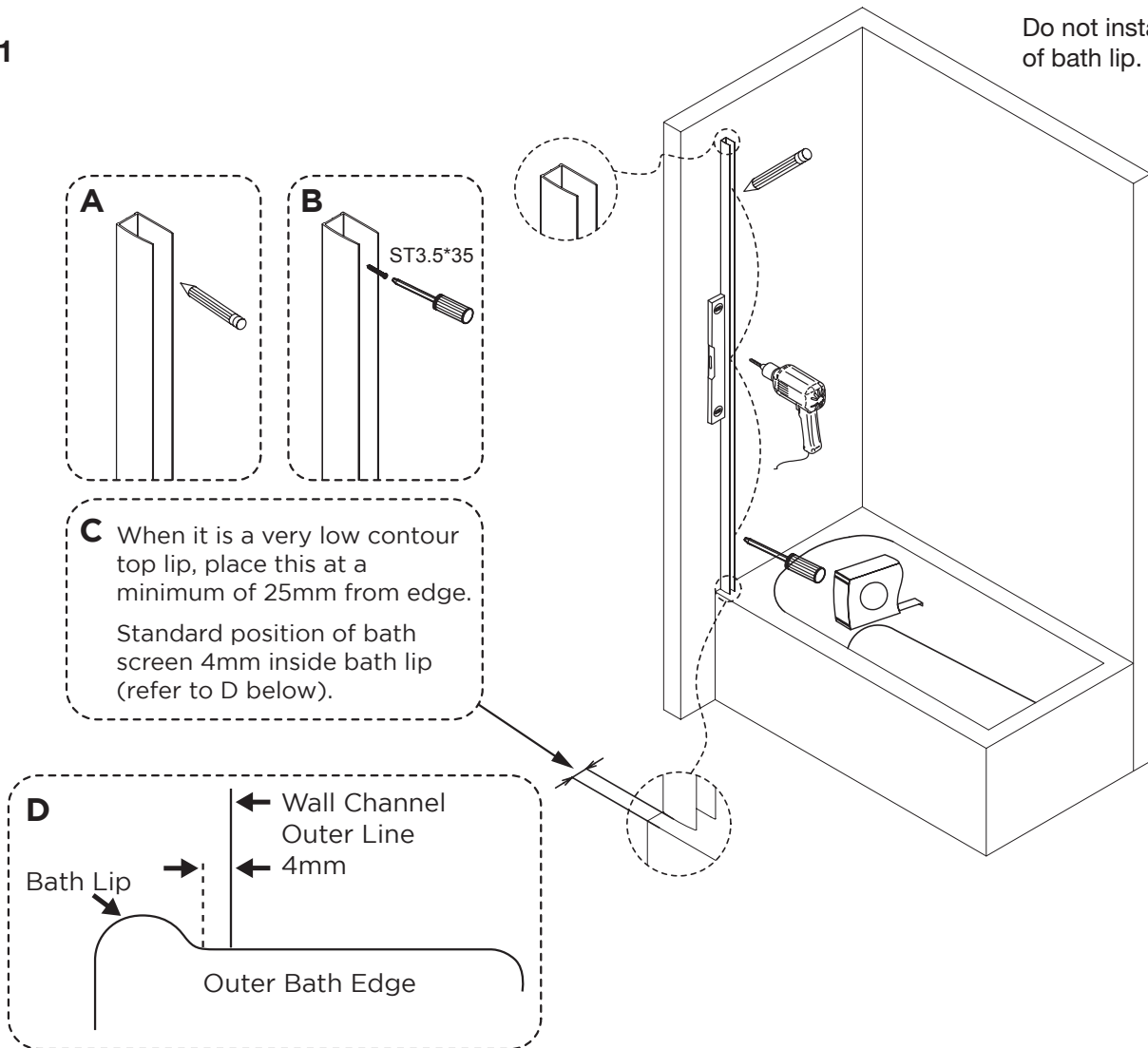
<b>Swinging Glass Door</b>  02   1 PCS		<b>Door Channel PAR3953</b>  03   1 PCS		<b>Centre Seal PAR5735</b>  04 ★   1 PCS		<b>Bottom Hinge PAR8224</b>  05 ★   1 PCS		<b>Top Hinge PAR8217</b>  06 ★   1 PCS	
<b>Screw Pack PAR8231</b>									
<b>Cap</b>  08   3 PCS	<b>Wall Plug</b>  09   3 PCS Ø6*30	<b>Screw 3.5x35mm</b>  10   3 PCS	<b>Screw 4x10mm</b>  11   3 PCS	<b>Screw 3.5x30mm</b>  12 ★   2 PCS	<b>Screw 4x6mm</b>  13 ★   2 PCS	<b>30mm Seal PAR2147</b>  14   1 PCS	<b>15mm Seal PAR2154</b>  15   1 PCS	<b>Adhesive Deflector Seal PAR2161</b>  16   1 PCS	

# INSTALLATION

## LOCATION OF WALL CHANNEL

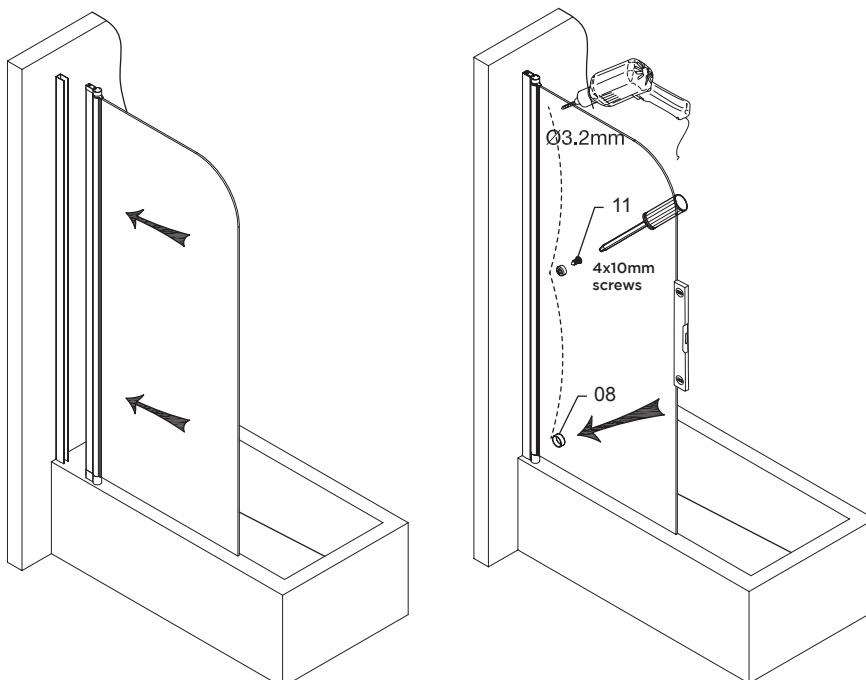
1

Do not install on top of bath lip.



2 Fit assembled bath screen into wall channel.

Ensure the gap under door is parallel preferably slightly greater at outer end of door.



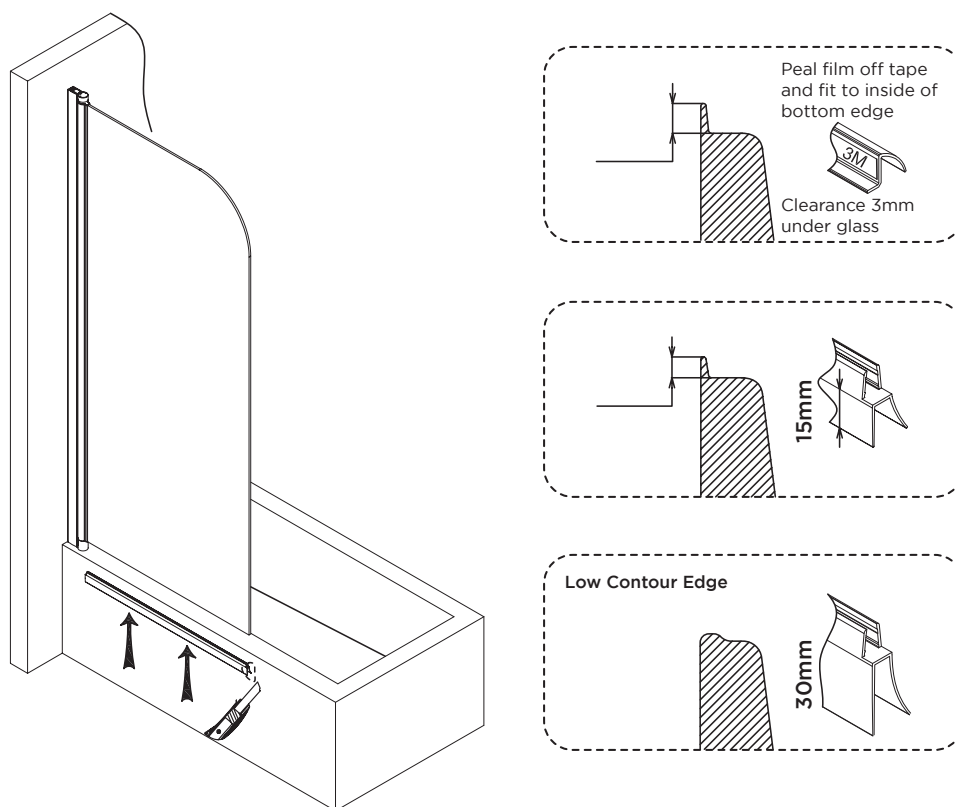
**NOTE:**

If you have a 30mm bath lip, raise the height of the fixed glass 3mm above the bath.

This will ensure sufficient clearance of the lip.

## INSTALLATION

3 Choose applicable door bottom seal and trim to length.



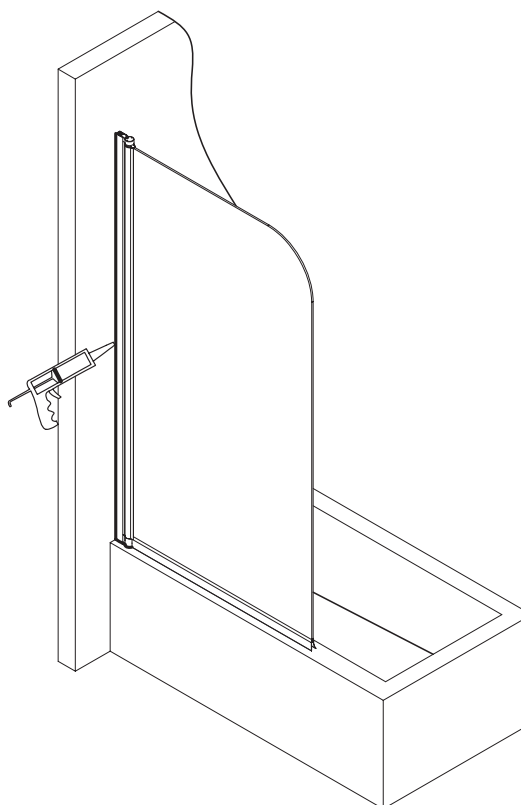
4 Silicone seal join as indicated.

### NOTE:

If you have installed the screen with up to a 3mm gap under the fixed glass and hinge, remove fastenings on wall channel. Lift and silicone fully under hinge, lower and refasten screen to wall channel.



Allow 36 hours min for silicone to cure.



## CONTACT

**NEWLINE**  
*for a lifetime!*

3 Hynds Road, Greerton, Tauranga 3112  
info@newline.co.nz  
0508 639 5463 | 09 444 2053  
www.newline.co.nz