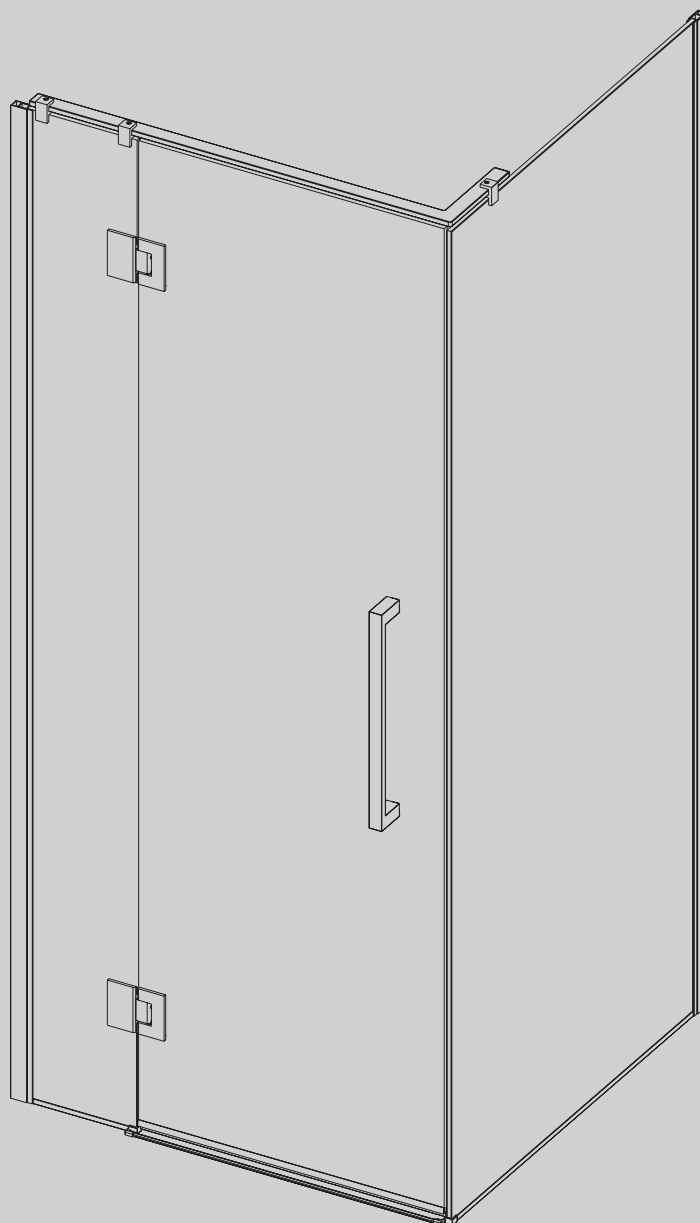


INCLUDES: 2-SIDED SHOWERS AND 3-SIDED ALCOVE DOORS



Important

1. When you receive your Newline shower, check contents for any freight damage.
2. Advise Newline on 0508 639 5463 if any damage has occurred or a defect identified within 8 hours of receiving the goods so this can be rectified.
3. Do not proceed with installation until resolved.

BEFORE YOU START



1. It is required that the installer must be skilled in this type of installation.
2. The Tray Base, Plumbing, Waterproofing, Water Stops and Tiling must be compliant with all regulations and are not included in this document.
3. The walls must be a 3mm maximum variation to plumb up to the shower height. The floor must have a maximum variation of 3mm to level within shower.
4. The ordered Shower Specification must be matched to your Tray Design.
5. Read these current instructions through, familiarise yourself with all aspects of installation, tools & equipment required, and materials used.

HEALTH AND SAFETY



1. Unpack glass, stand on soft packing on floor and walls prior to assembly.
2. Do not rework glass panels. Avoid striking any edge as toughened glass will explode.
3. Two persons for heavy glass lifting especially fitting/installing into channels.
4. Wear appropriate protective clothing, gloves, and eye protection during installation.

WARRANTY

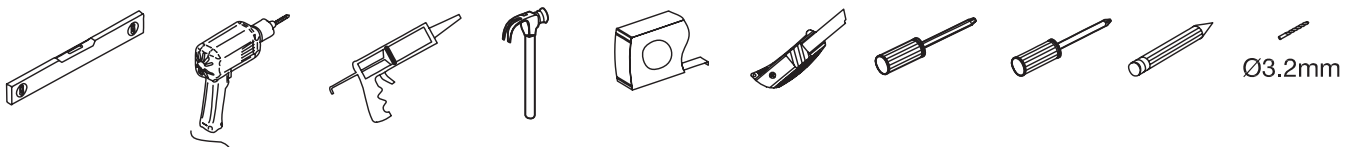
- This covers faulty goods. Visit **newline.nz** for details.
- Installation instructions must be followed for the warranty to be valid.

ATTENTION



1. Aluminium Channels must be fully protected against scratches and abrasions.
2. Channels are inspected and packed in a plastic tube for you to check. Do not install any channel that has a defect.
3. Apply a protection tape to the faces of the wall channels before you start.
4. It is the installer's responsibility that all installation complies with council regulations.
5. Tape down cardboard packaging on Tile Tray to protect against tool or other potential impacts or contamination.

TOOLS AND MATERIALS REQUIRED

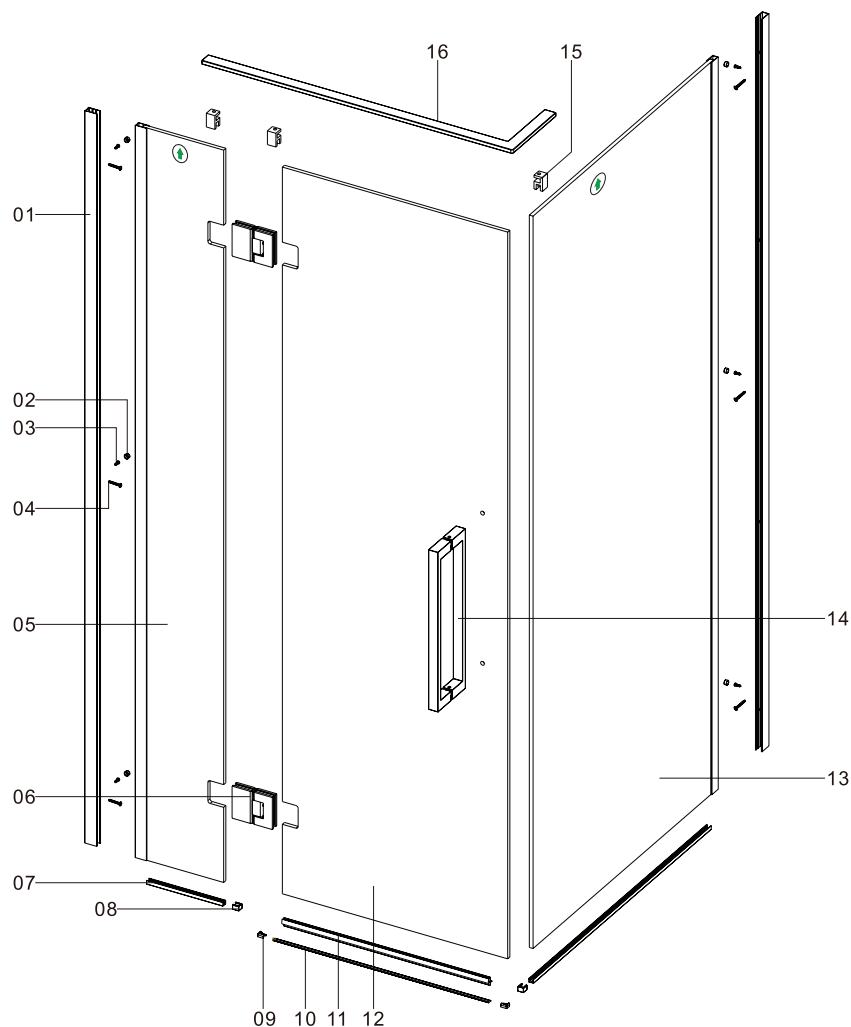


INDEX






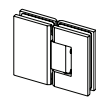
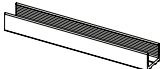
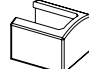
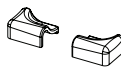


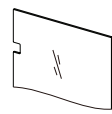
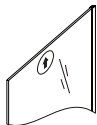
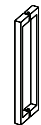
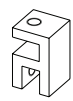
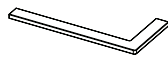
PAGE

2-Sided shower	4-7
3-Sided Alcove shower	8-12

2-SIDED SHOWER COMPONENTS



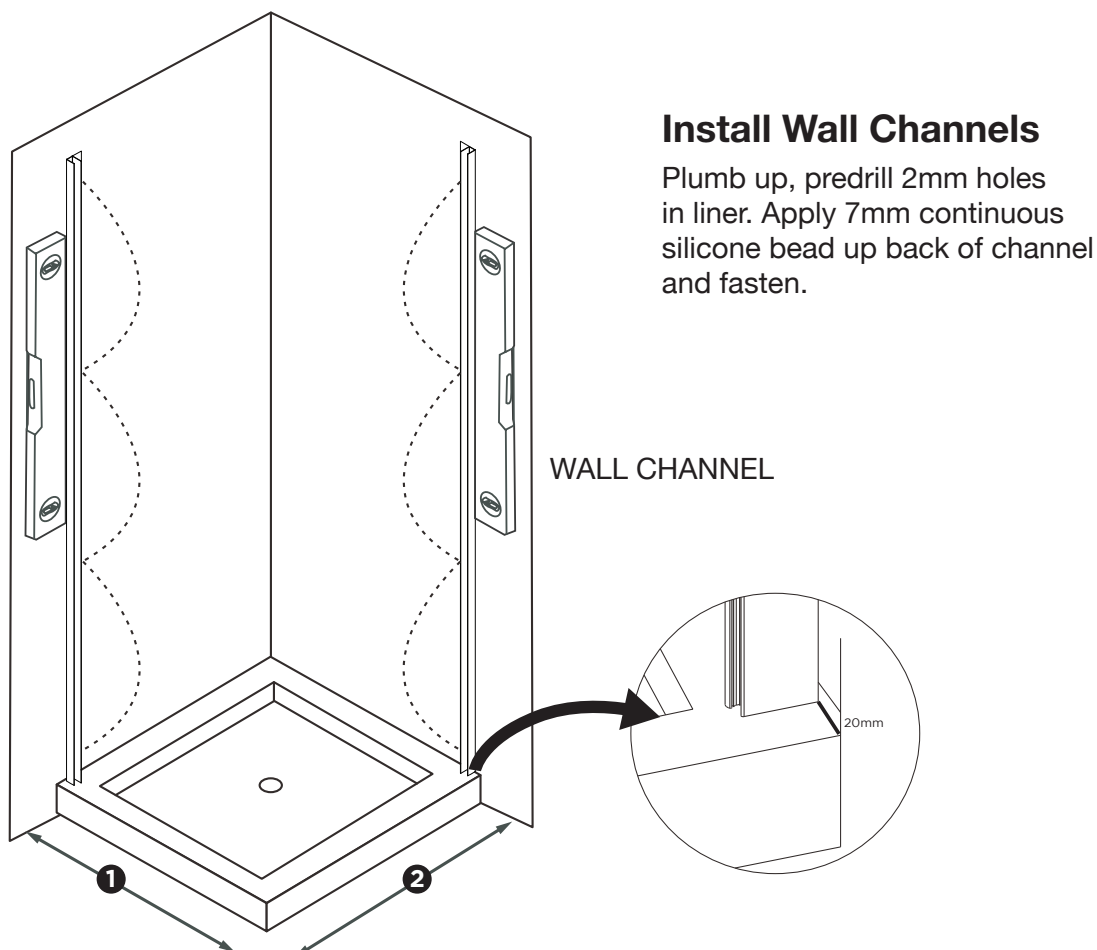
COMPONENT LIST

Wall Profiles  01 2 PCS	Screw Caps  02 6 PCS	Screw ST4x10 Square Head  03 6 PCS	Screw ST4x30  04 6 PCS	Fixing Panel  05 1 PC	Hinges  06 2 PCS
Bottom Profiles  07 2 PCS	Bottom Profile End Caps  08 2 PCS	Bottom Strip Cover Caps  08 2 PCS	Bottom Strip  10 1 PC	Bottom Seal  11 1 PC	Moving Panel  12 1 PC
Return Panel  13 1 PC	Handle  14 1 PC	Glass Clamps  16 3 PCS	Top Support Bar  16 1 PC		

OVERVIEW: This shower combines two different elements of shower designs.

1. Standard screw fastening of wall channels
2. "Wet Fit" floor channels bonded to acrylic tray.

DIAGRAM A



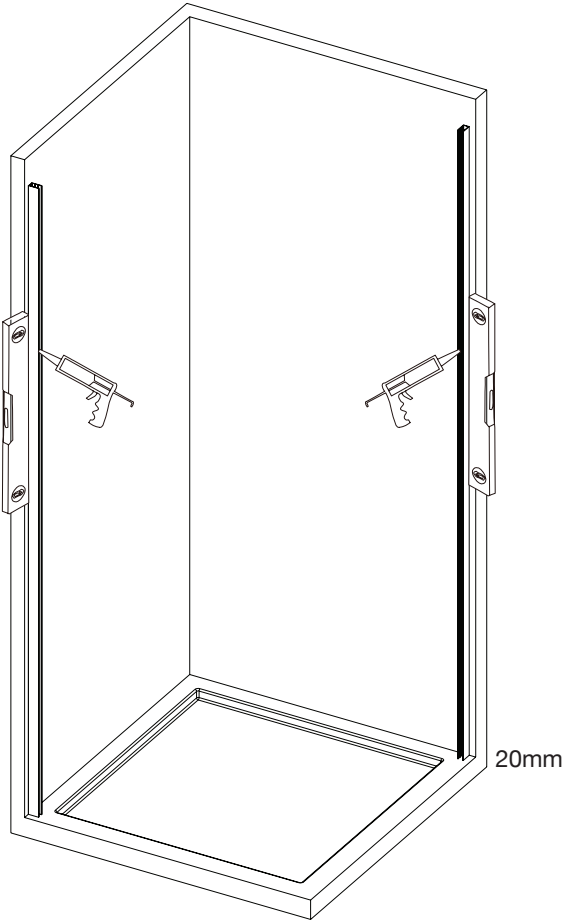
MINIMUM TO MAXIMUM TABLE

TRAY SIZE	DOOR SET	RETURN PANEL
900 x 900	864-874	853-863
915 x 915	897-907	865-875
1000 x 1000	964-974	977-987
1200 x 900	1164-1174	853-863

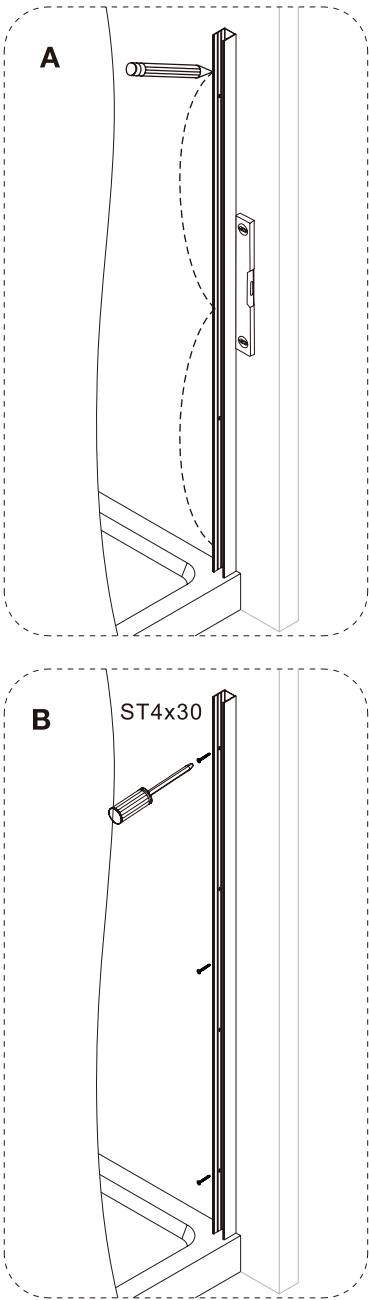
Note: All measurements assume the floor is level, the walls are plumb, and flat. Assess your specific situation and any measures that may be needed to install this successfully.

1

Walls out of plumb will not allow for full minimum/maximum options.



Mark wall profile.

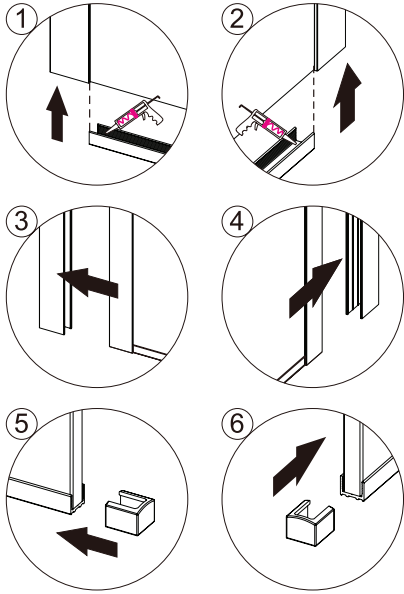
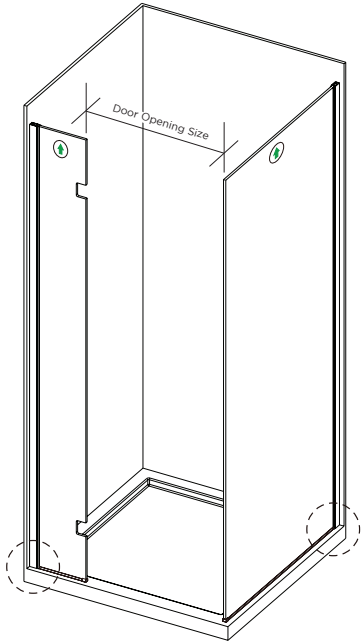


Fasten wall profiles for return and door panels.

MINIMUM TO MAXIMUM TABLE

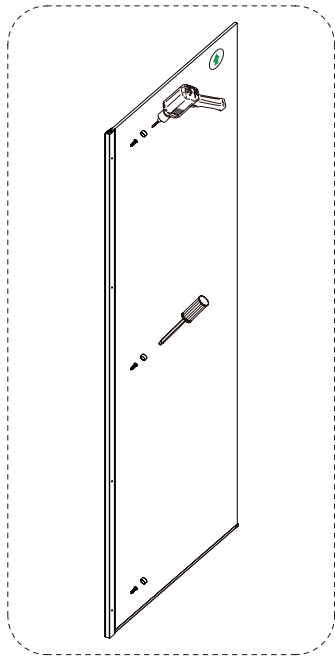
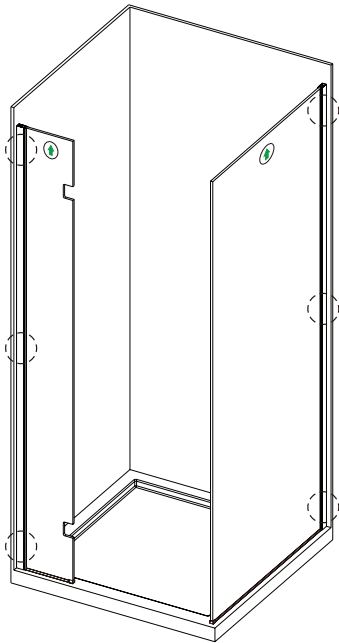
TRAY SIZE	DOOR SET	RETURN PANEL

2



DOOR SIZE	DOOR OPENING SIZE
900x900	556mm
915x915	606mm
1000x1000	656mm
1200x900	656mm
1200x915	656mm

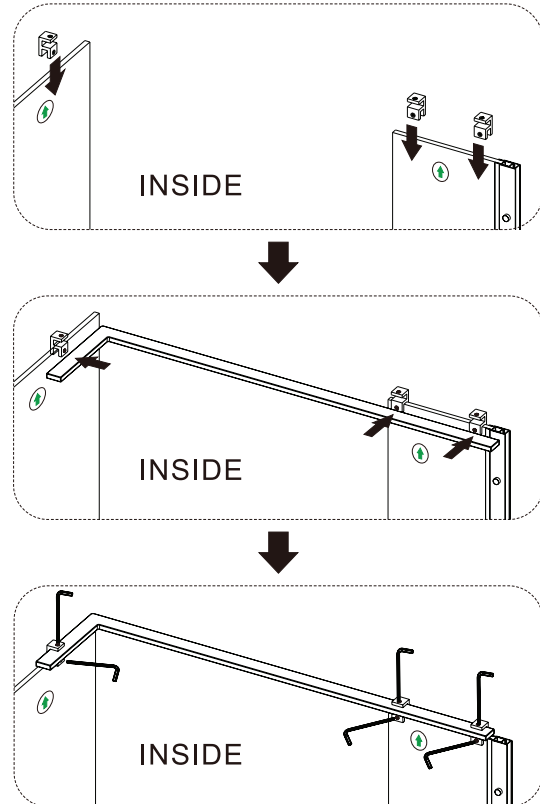
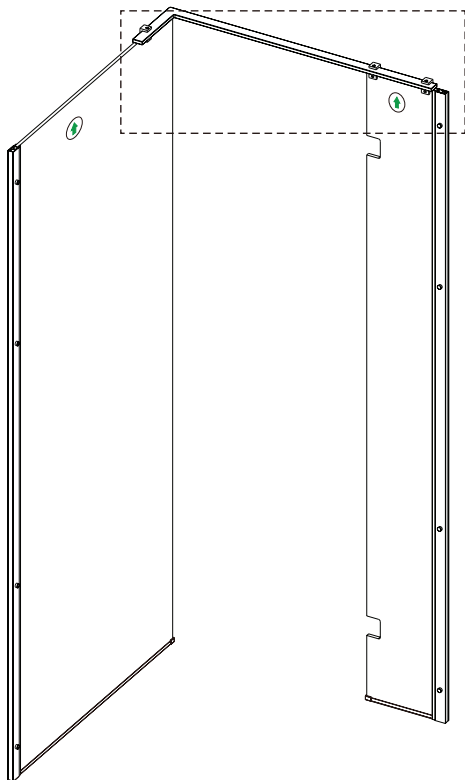
3



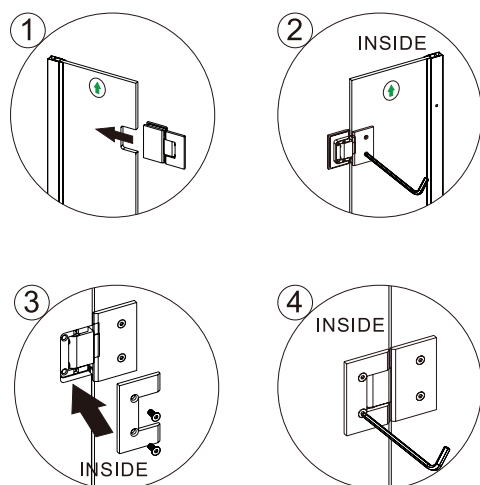
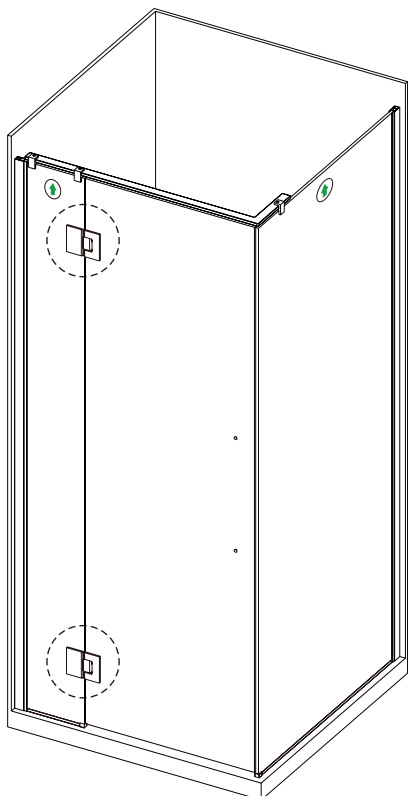
MINIMUM TO MAXIMUM TABLE

TRAY SIZE	DOOR SET	RETURN PANEL

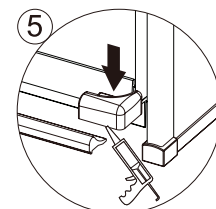
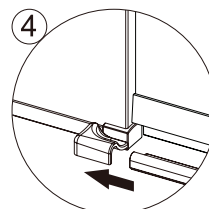
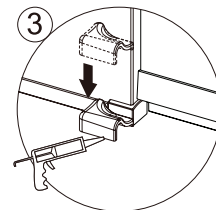
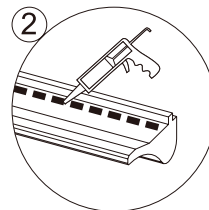
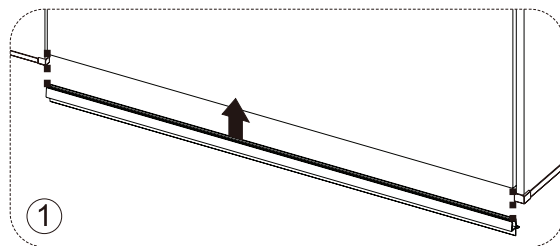
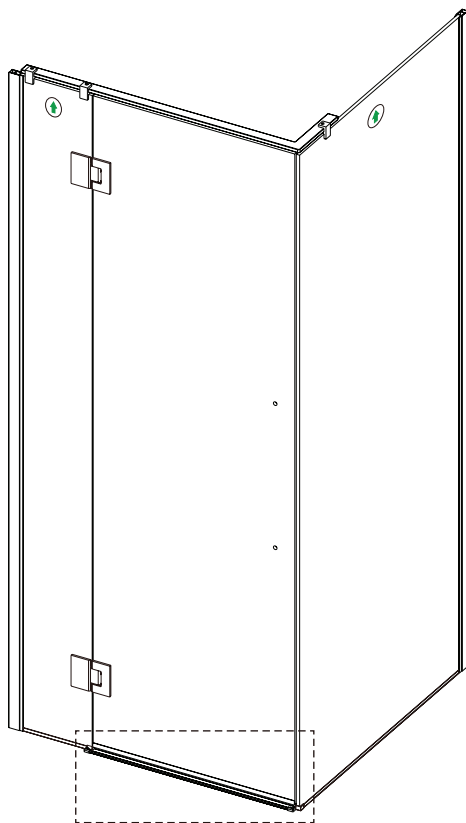
4



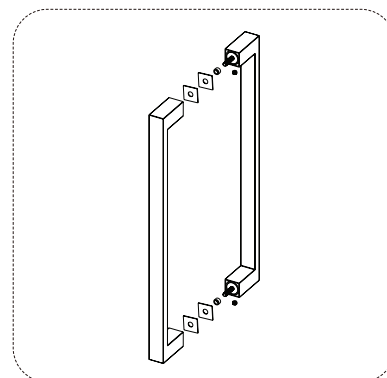
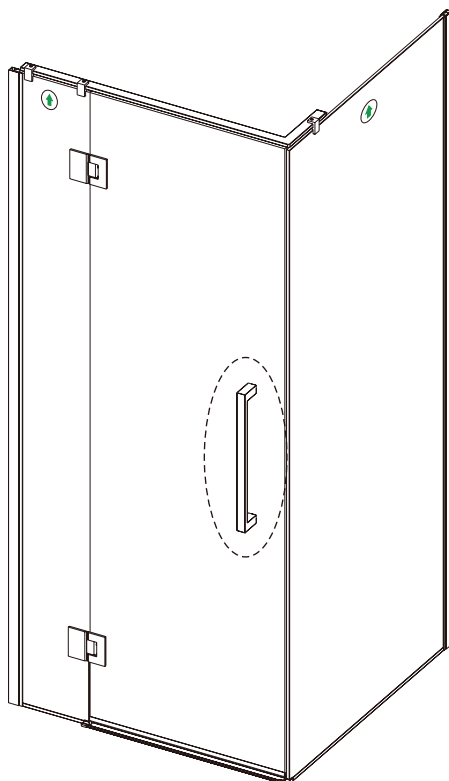
5



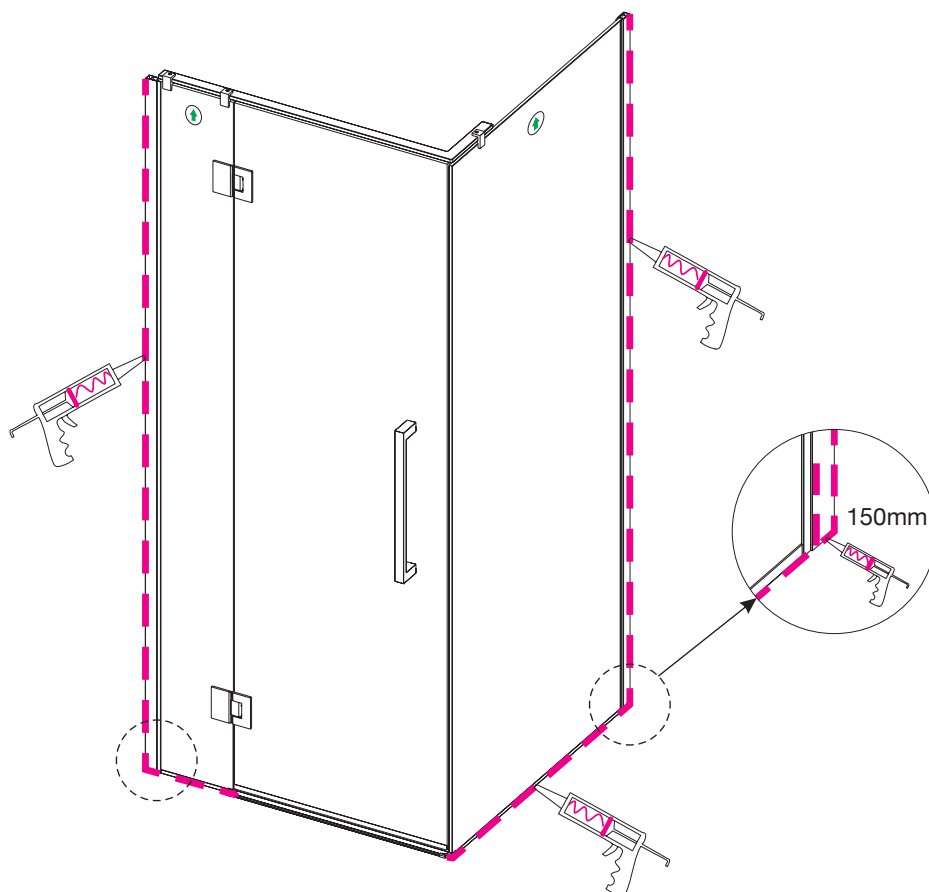
6



7



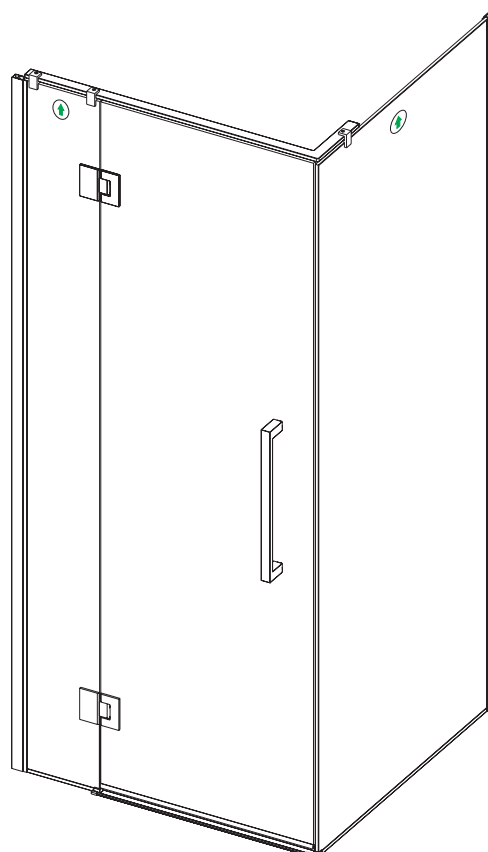
8



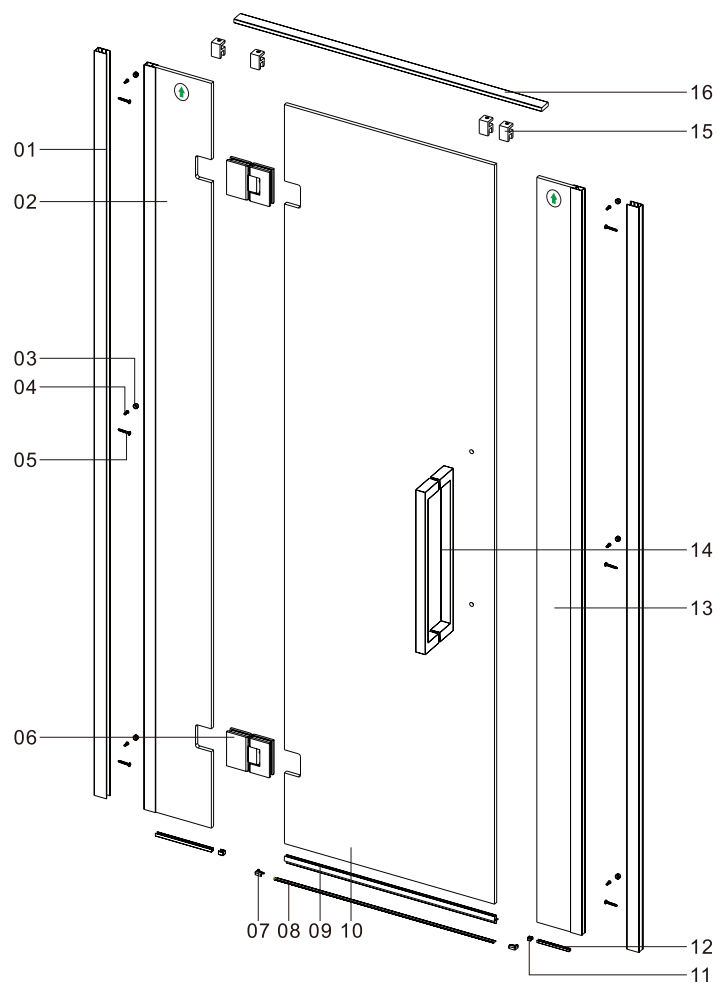
9



Allow 24 hours for silicone to dry before use.



HINGED 3-SIDED ALCOVE SHOWER

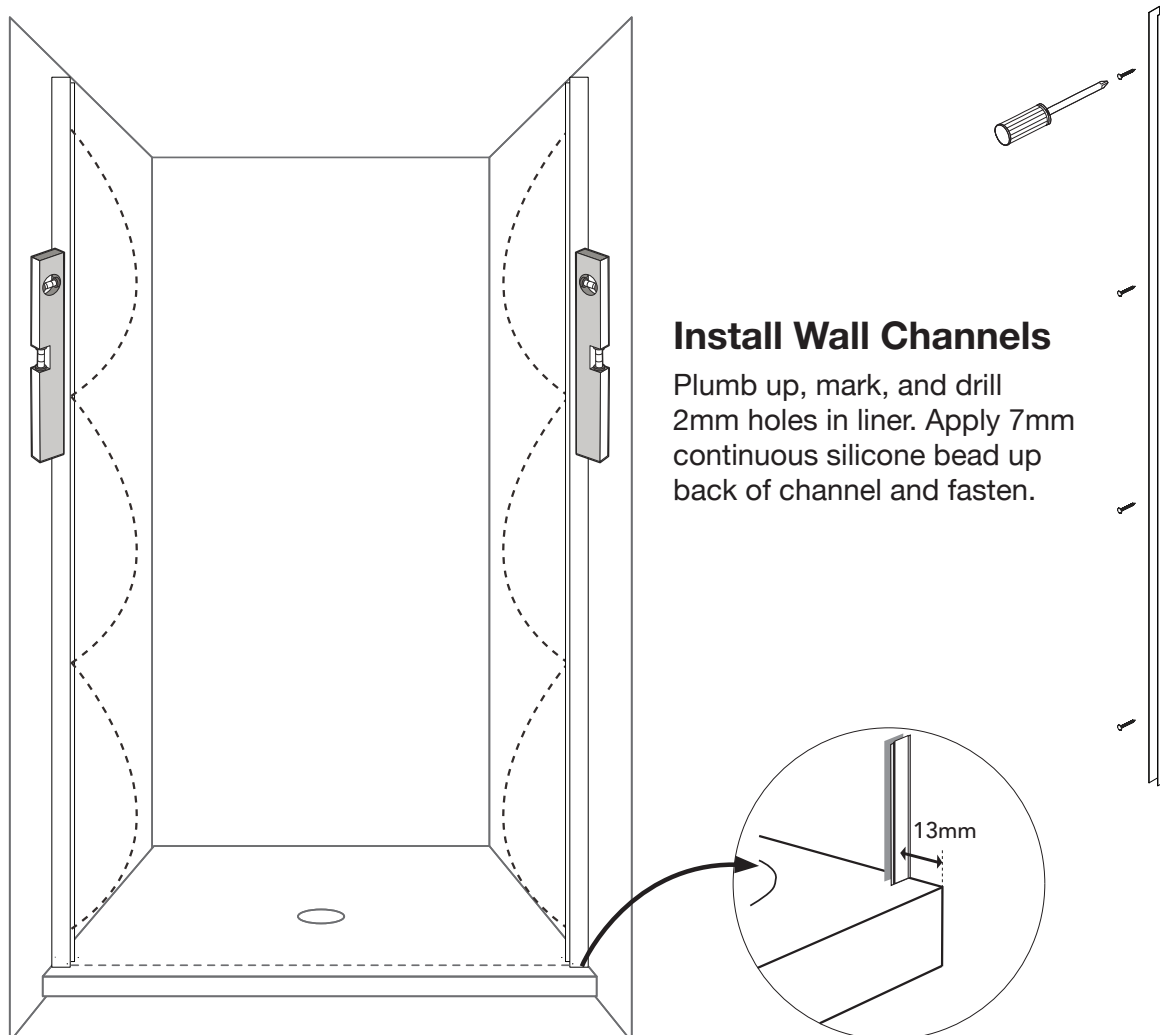


COMPONENT LIST

Wall Profiles 01 2 PCS	Fixing Panel A 02 1 PC	Screw Caps 03 6 PCS	Screw ST4x10 04 6 PCS	Screw ST4x30 05 6 PCS	Hinges 06 2 PCS
Bottom Strip Cover Caps 07 2 PCS	Bottom Strip 08 1 PC	Bottom Seal 09 1 PC	Moving Panel 10 1 PC	Bottom Profile End Caps 11 2 PCS	Bottom Profiles 12 2 PCS
Fixing Panel B 13 1 PC	Handle 14 1 PC	Glass Clamps 15 3 PCS	Top Bar 16 1 PC		

OVERVIEW: This shower combines two different elements of shower designs.

1. Standard screw fastening of wall channels
2. "Wet Fit" floor channels bonded to acrylic tray.



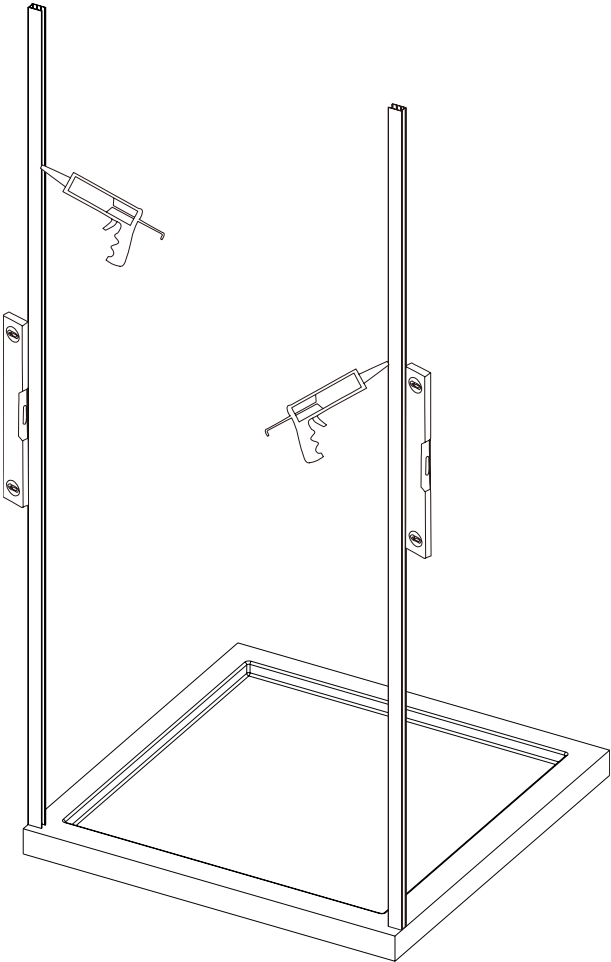
3-SIDED ACRYLIC ALCOVE TABLE

TRAY SIZE	GIB TO GIB SIDE TO SIDE	LINER TO LINER SIDE TO SIDE	DOOR SET MIN - MAX
900	880mm	874mm	864-884
1000	980mm	974mm	964-984
1200	1180mm	1174mm	1164-1184

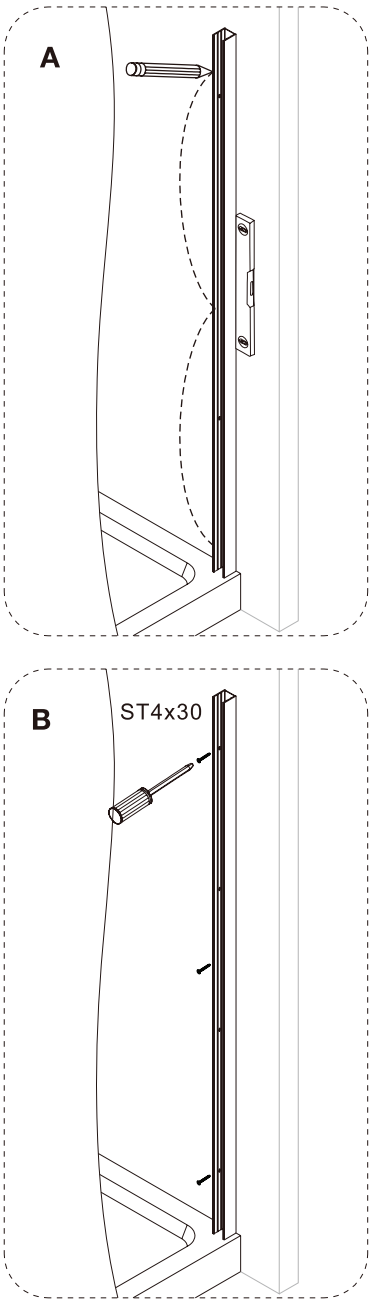
Note: All measurements assume the floor is level, the walls are plumb, and flat. Assess your specific situation and any measures that may be needed to install this successfully.

1

Walls out of plumb will not allow for full minimum/maximum options.



Mark wall profile.

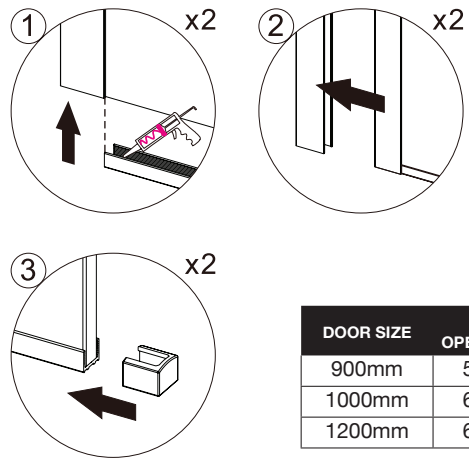
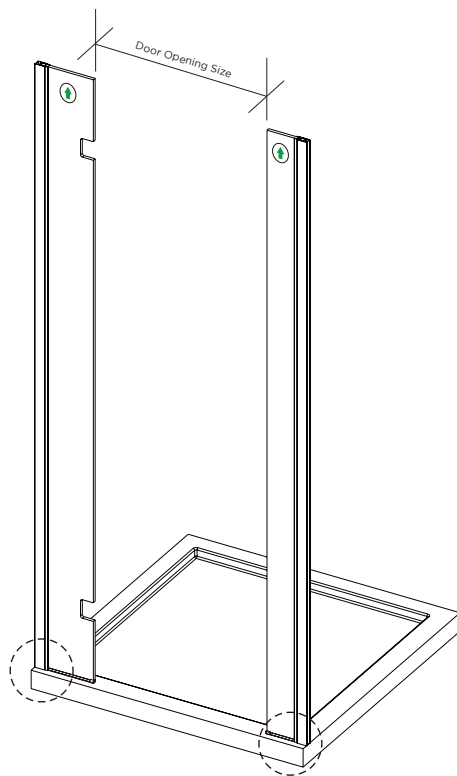


Fasten wall profiles for return and door panels.

MINIMUM TO MAXIMUM TABLE

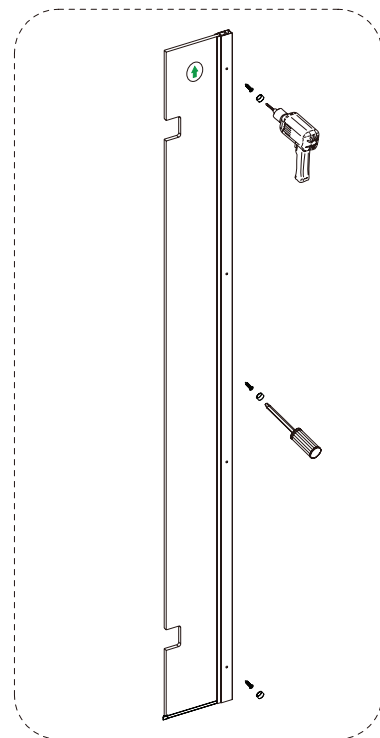
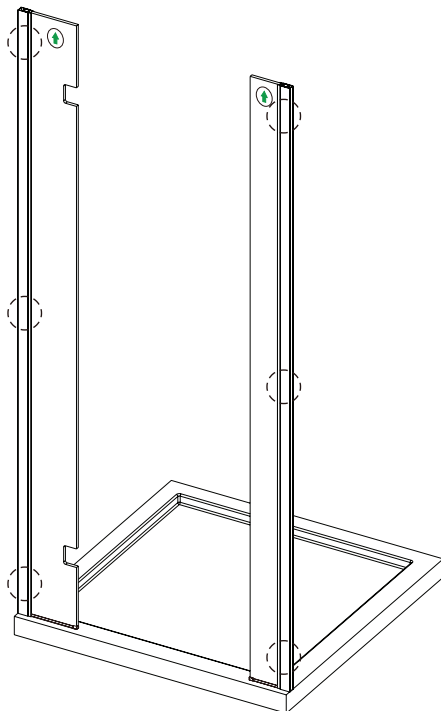
TRAY SIZE	DOOR SET	RETURN PANEL

2

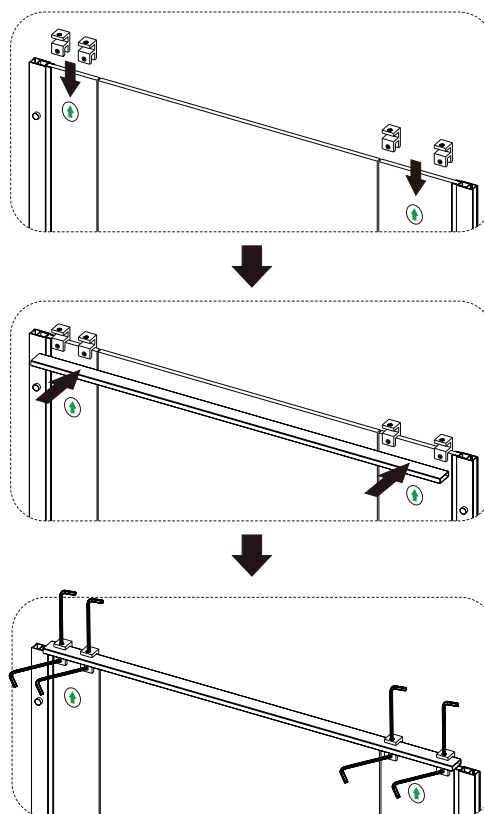
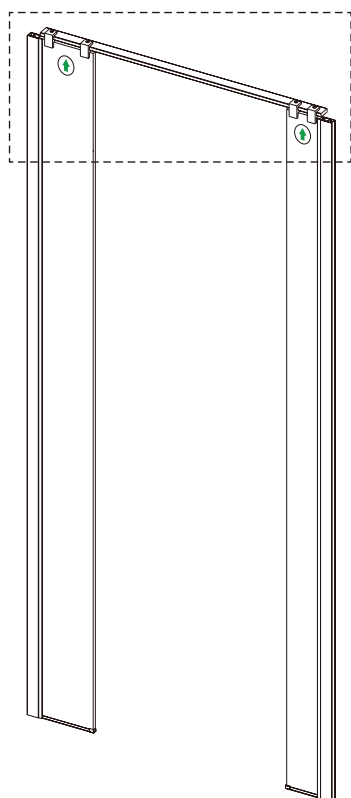


DOOR SIZE	DOOR OPENING SIZE
900mm	556mm
1000mm	656mm
1200mm	656mm

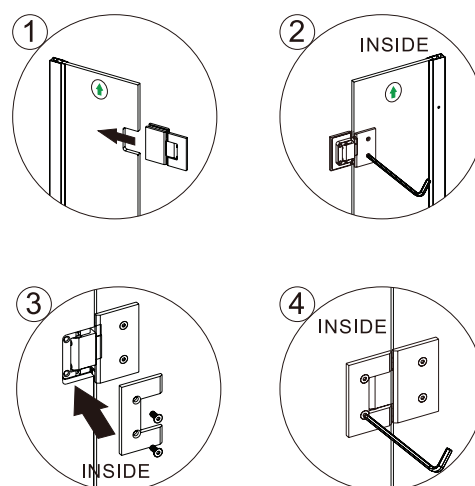
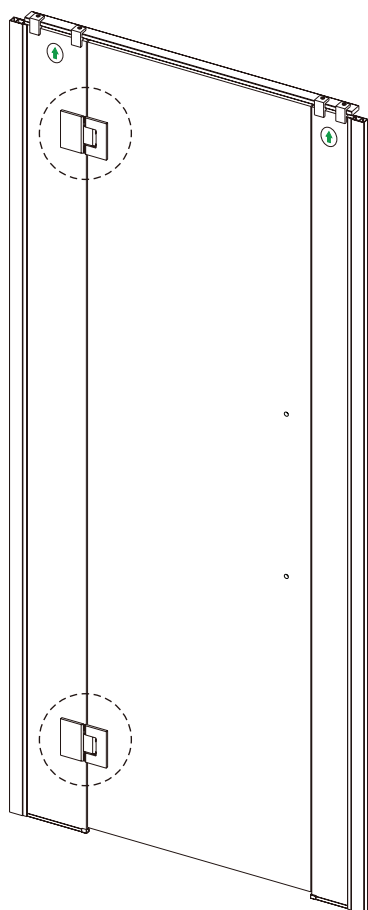
3



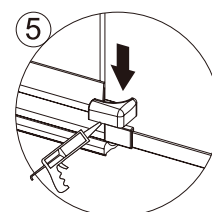
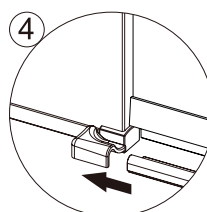
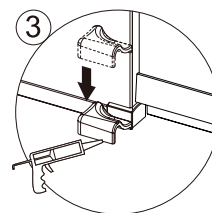
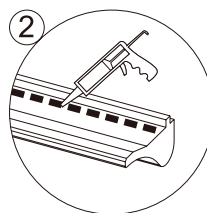
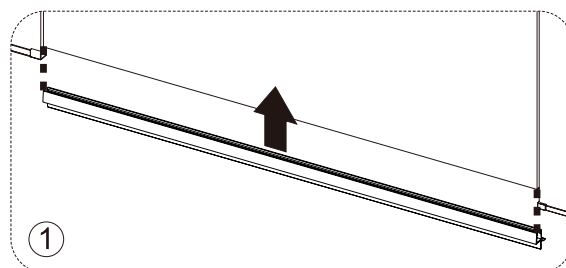
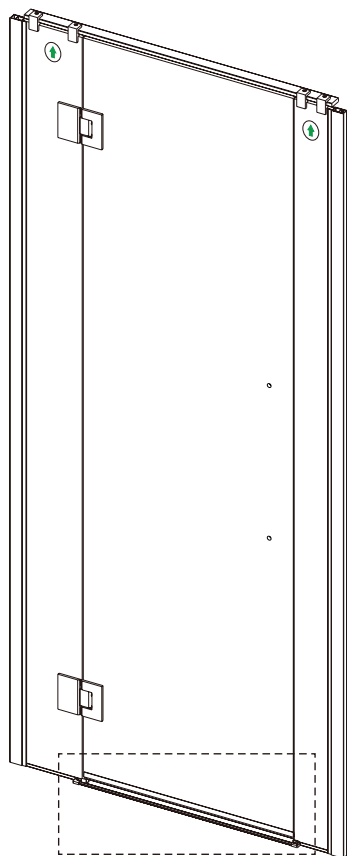
4



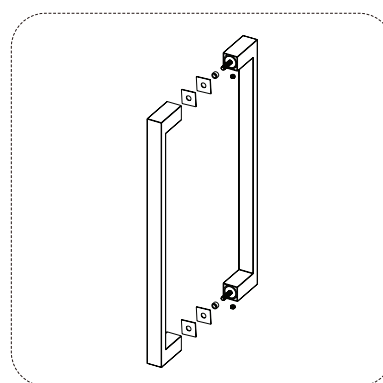
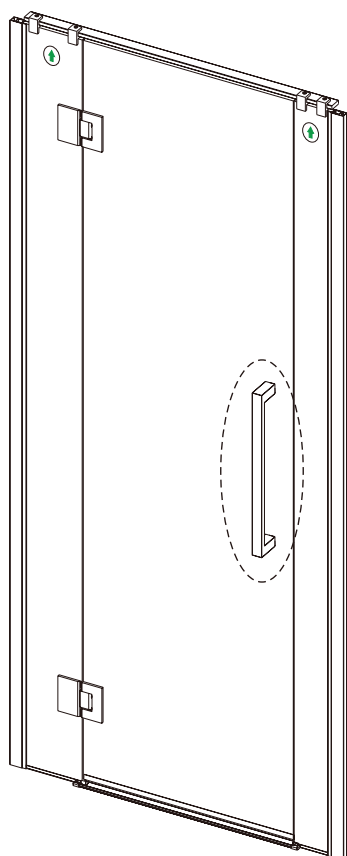
5

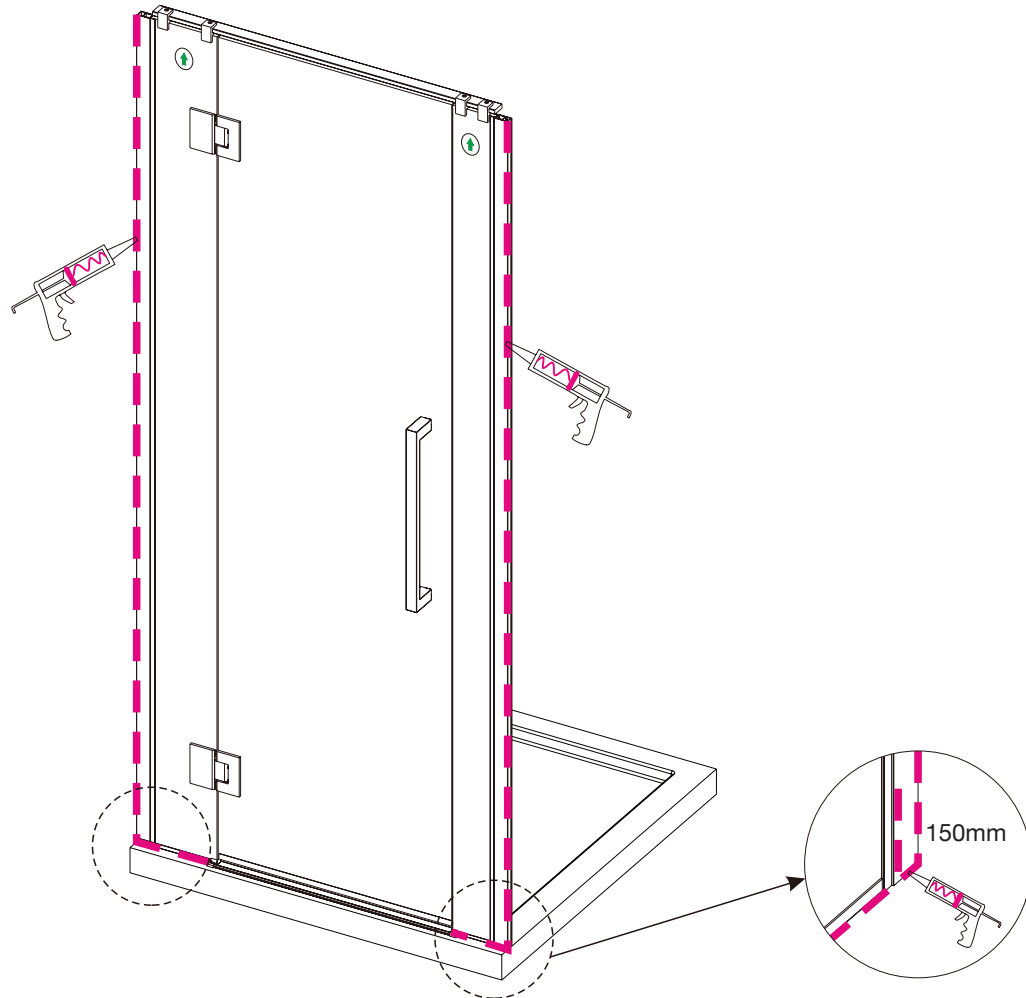


6



7





Allow 24 hours for silicone to dry before use.

NEWLINE
for a lifetime!

54 Unutoto Place, Tauriko, Tauranga, 3171

Freephone: 0508 639 5463 Phone: 09 444 2053

Email: info@newline.co.nz newline.nz