

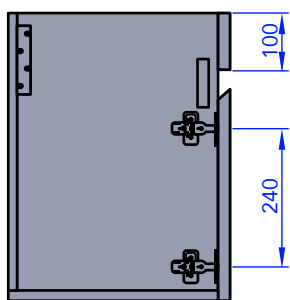
AquaTight Vanity | 600, 750, & 900mm



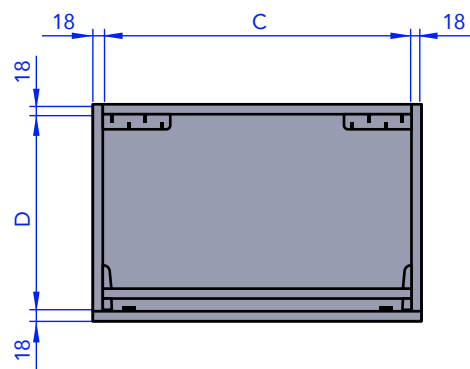
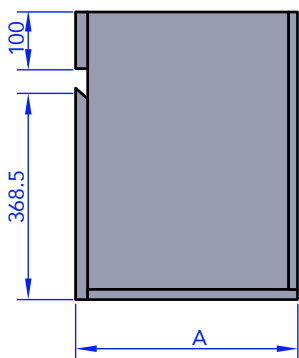
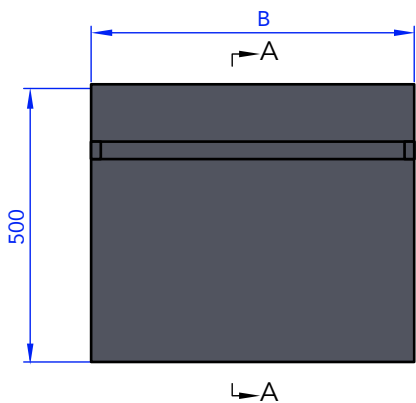
PRODUCT FEATURES

- PVC Waterproof Interior and Exterior
- Wall Hung
- Available in 600mm, 750mm and 900mm
- Vitreous China Top
- Gloss White Finish

SPECIFICATIONS



Section A-A



SIZE	UNIT DEPTH	UNIT WIDTH	DRAWER WIDTH	DRAWER DEPTH
	A	B	C	D
600mm	388	590	554	352
750mm	448	740	704	412
900mm	448	890	854	412

Product Disclosure

VANITIES

CLASS: ONE

DESCRIPTION: The AquaTight waterproof vanities consist of a wall hung base constructed from 18mm PVC Board, and galvanized iron hinges. AquaTight vanities are designed for use with a 20mm vitreous china top and are available in a range of standard sizes from 600mm up to 900mm. Only white colour is available for the vanity. AquaTight vanities feature double soft close doors and internal storage.

CONTRIBUTIONS TO COMPLIANCE

B2.3.1 (c) (i) and (ii): Newline vanities have a warranted durability of 5 years when maintenance standards are adhered to. Parts are readily available to replace. Refer to Aftercare Document and Installation Instructions for further information.

G1.1 (a) and G1.3.2: Newline vanities are constructed from water resistant material. Surfaces can be easily cleaned using warm soapy water and an absorbent cloth. Water connections should be correctly installed by a licensed plumber to ensure appropriate discharge to the plumbing/drainage system as per G13.2 Foul Water. Refer to installation instructions for further information.

E3.3.5 and E3.3.6: Newline AquaTight vanities are constructed from 18mm PVC Board and is compatible with water contact that is intended to occur when in use. Any joins in the cabinet that are susceptible for water ingress are sealed with silicone including cabinet to wall. Full information is outlined in Aftercare Document and Warranty Information.

SCOPE OF USE

Newline vanities are intended for use in the following environments:

- Domestic and commercial bathrooms, including residential homes, government housing, hotels and apartments.
- Suitable for use with cold and warm water.
- Used as a wall mounted unit. Determine positioning of wiring and piping within cavity walls prior to installation. Walls must not be out of plumb as this will cause the fit of the doors to be misaligned.
- Tiling must be completed prior to vanity installation

WARNINGS AND BANS

This product is not subject to warning or bans under section 26 of the Building Act 2004.

CONTACT DETAILS

Location: NZ for Local and Imported Products

Legal and Trading Name of Manufacturer: Newline Group Ltd

Importer Address for Service: 54 Unutoto Place, Tauranga, 3171

Importer Website: newline.nz

Importer Email: info@newline.co.nz

Importer Phone Number: 0508 NEWLINE

CONDITIONS OF USE

- Newline vanities are intended for use under regulated water pressure that is balanced to the size of the basin and water splash is controlled. Vanities are not intended for use with water that exceeds 55 degrees Celsius.
- Must be installed in accordance with Newline AquaTight Vanity Instruction Manual. Waste connections must have been correctly installed by a registered plumber. Installation must comply with instructions to be under warranty.
- Cleaning products including bleaches, solvents, alcohol, citrus based chemicals, bath oils, and/or any abrasive cleaner should not be used. Full list is outlined in aftercare document.

SUPPORTING DOCUMENTATION

The following additional documentation supports the above statements:

[Aftercare and Maintenance Doc](#)

[Warranty Information](#)

[AquaTight Vanity Instruction Manual](#)