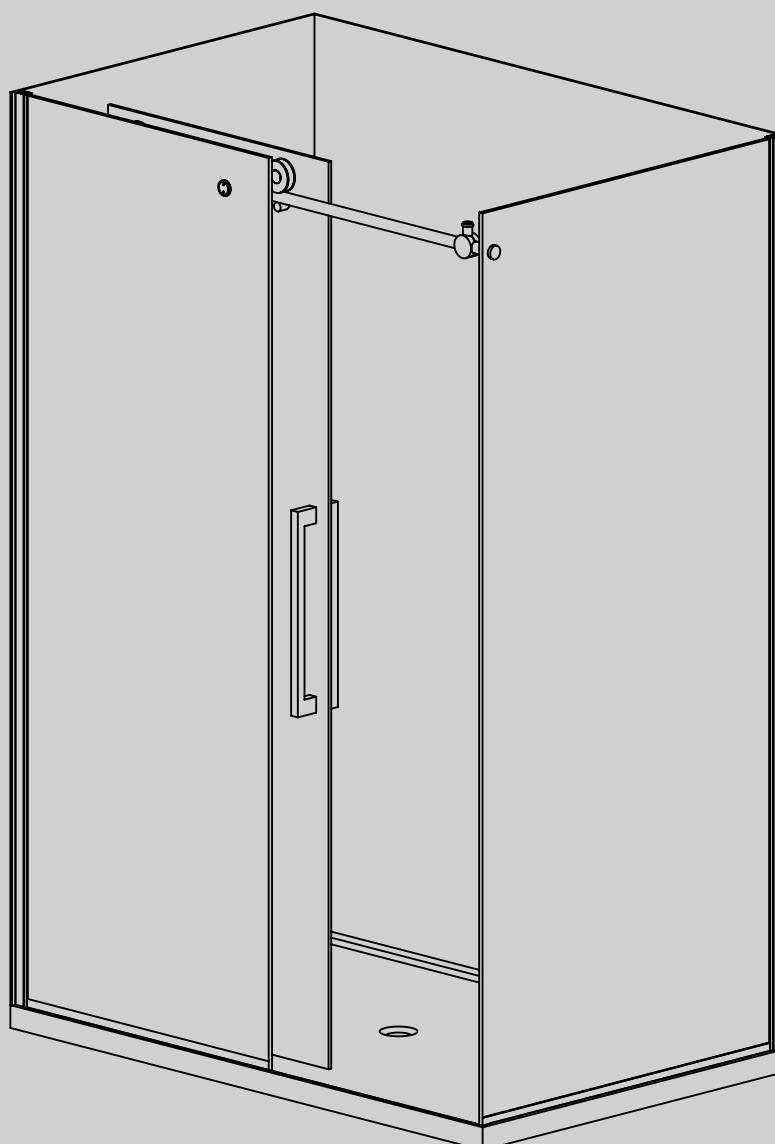


INCLUDES: 2-SIDED SHOWERS AND 3-SIDED ALCOVE DOORS

INDEX	PAGE
2-Sided Shower	3-8
3-Sided Shower	9-11



Important

1. When you receive your product check the contents for any freight damage or defects.
2. If this is a custom order, the size will be on the outside of the box. Check that it is correct.
3. Advise Newline on 0508 639 5463 if any damage has occurred or if you have any questions about the size within 8 hours of receiving the goods so this can be rectified.
4. Do not install faulty products, as this will void your warranty.

BEFORE YOU START

Newline provides full Specification Documents for two Categories of Showers.

WAIT

- **Before you start** please read through the pre-install guide that applies to this project.

Acrylic Pre-Install Specifications

Tile Pre-Install Specifications

HEALTH AND SAFETY



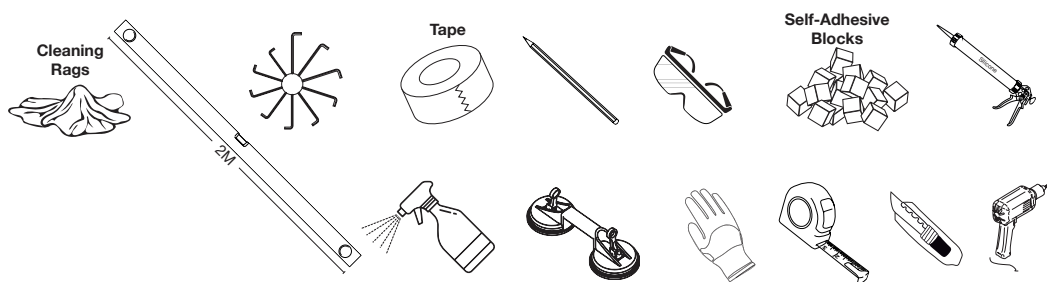
- **Unpack glass**, stand on soft packing on floor and walls prior to assembly.
- **Do not** rework glass panels.
- **Do not** strike an edge or corner of glass.
- **Use two persons** where heavy glass lifting is required.
- **Wear appropriate** protective clothing and eye protection during installation.
- **Mark gas/water pipe** and electrical wire locations to ensure these are not touched.

ATTENTION



- **The tray base** must be installed level as this affects all shower alignments.
- **Wall Specifications** require a max variation of 3mm within shower height. Installer must check the viability of install if outside of these specs.
- **3-Sided Alcove Showers:** Wall must be accurate, straight, and plumb. Refer pre-install guide.
- **Double studs for solid fixing of wall channels:** Positioned at tray outside edge and inwards
- **Double Studs:** These must be in place from outside of either acrylic or tile tray inwards. This is essential to fasten top door rail.
- **Water-stops:** These must be included as in the "Tile Pre-Install Specifications"
- **The Installers Responsibility:** All compliance with all council regulations.

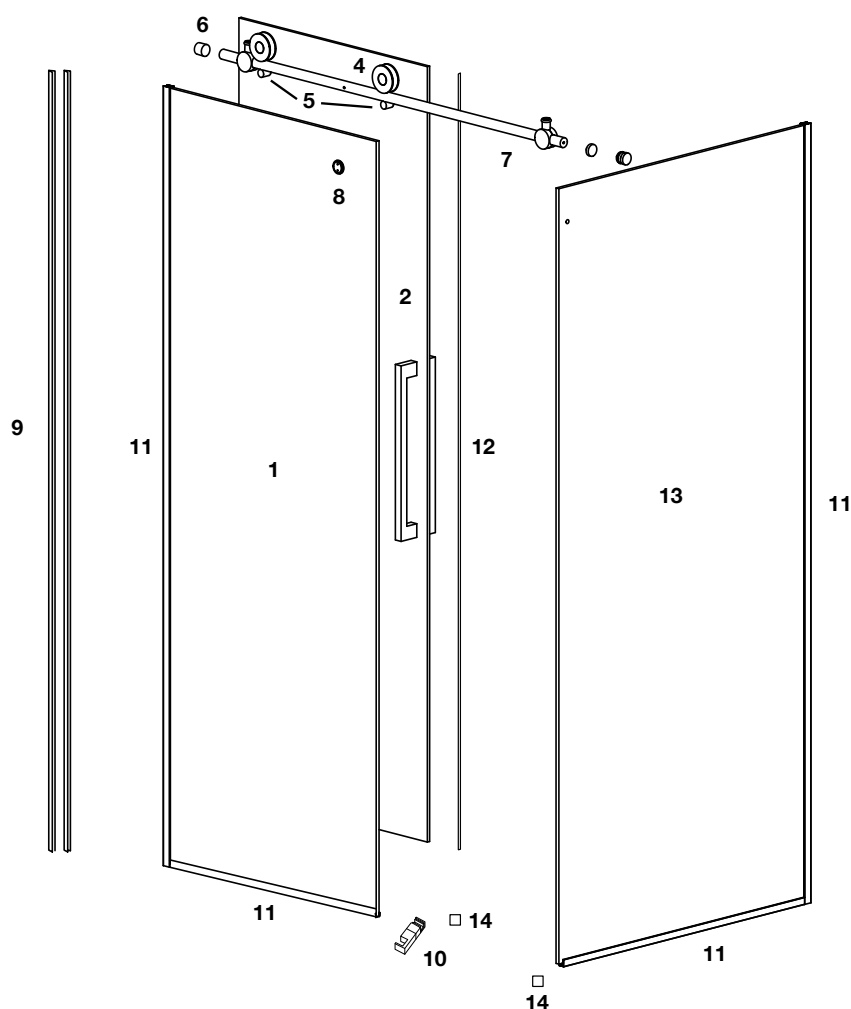
Tools Required



WARRANTY

- This covers faulty goods but not breakages. Visit newline.nz for information.
- Compliance with Specs and these instructions are essential for a valid warranty.

NEWLINE RECOMMENDS A SKILLED TRADESMAN ACQUAINTED WITH SHOWER INSTALLATIONS TO ENSURE THE VERY BEST OUTCOME.



COMPONENTS LIST

REFERENCE	DESCRIPTION	PART NUMBER	QUANTITY
1	Fixed Panel	E8539	1
2	Door Panel	E7822	1
3	Linear Handle 400mm	H5542.**	1
4	Door Wheel	H5658.**	2
5	Lock Pins	H5610.**	2
6	Wall Bracket	H7253.**	1
7	Door Stop	H5634.**	2
8	Bar Clip	H7239.**	1
9	Deflector Seals	I6112	2
10	Guide Bracket	H5252.**	1
11	U-Channels (Floor & Wall)	A9085.**	4
12	Buffer Seal	I6105	1
13	Return Panel	E7846	1
14	End Cap for U-Channel	H4708**	2

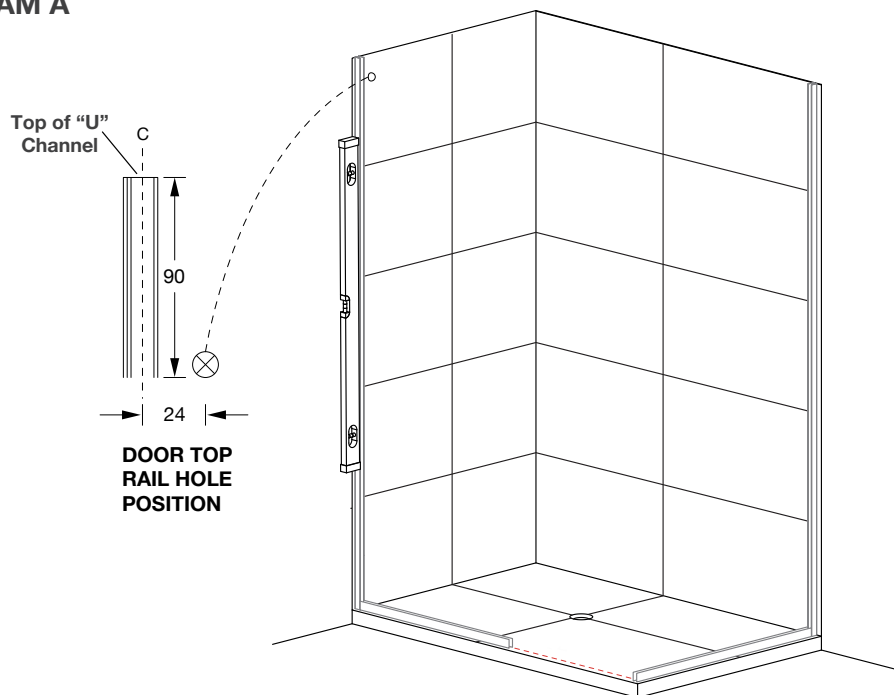
**Add colour code, e.g. .CR for Chrome, .BK for Black, .BN Brushed Nickel, .GM for Gun Metal and .BB for Brushed Brass

POSITIONING OF CHANNELS (TILED OR ACRYLIC SHOWERS)

1. Lay-out is a glazier format from finished tile in the corner to the centre line of the glass. Centre Line Confirms: Tile wall Water-Stop Position, Glass Centre & Wall Channel Centre.
2. Drawings for standard size 2-Sided Lay-outs are found on page 7 & 8
3. Custom size showers have specific specifications with each supplied shower.
4. Mark out the Wall Channels, Tray Positions & Top Rail mounting point as Diagram A

Note: 3-Sided Shower Table Page 9

DIAGRAM A



Acrylic Tray/Liner Channel Install.

1. Pre-drill wall channels with clearance holes.
2. Apply a bead of acrylic compatible silicone to back of channel and fasten to marked position
3. Apply a bead of silicone to the back of the floor channels and locate in the correct position. Floor channels can be held in place with adhesive blocks.

Tile Tray Channel Install.

1. Apply full bead of structured glazing silicone to back of wall channels, fasten to marked lines. Follow up with floor channels using same process.
2. Clean up silicone & use self-adhesive blocks to hold for a minimum of 48hrs.

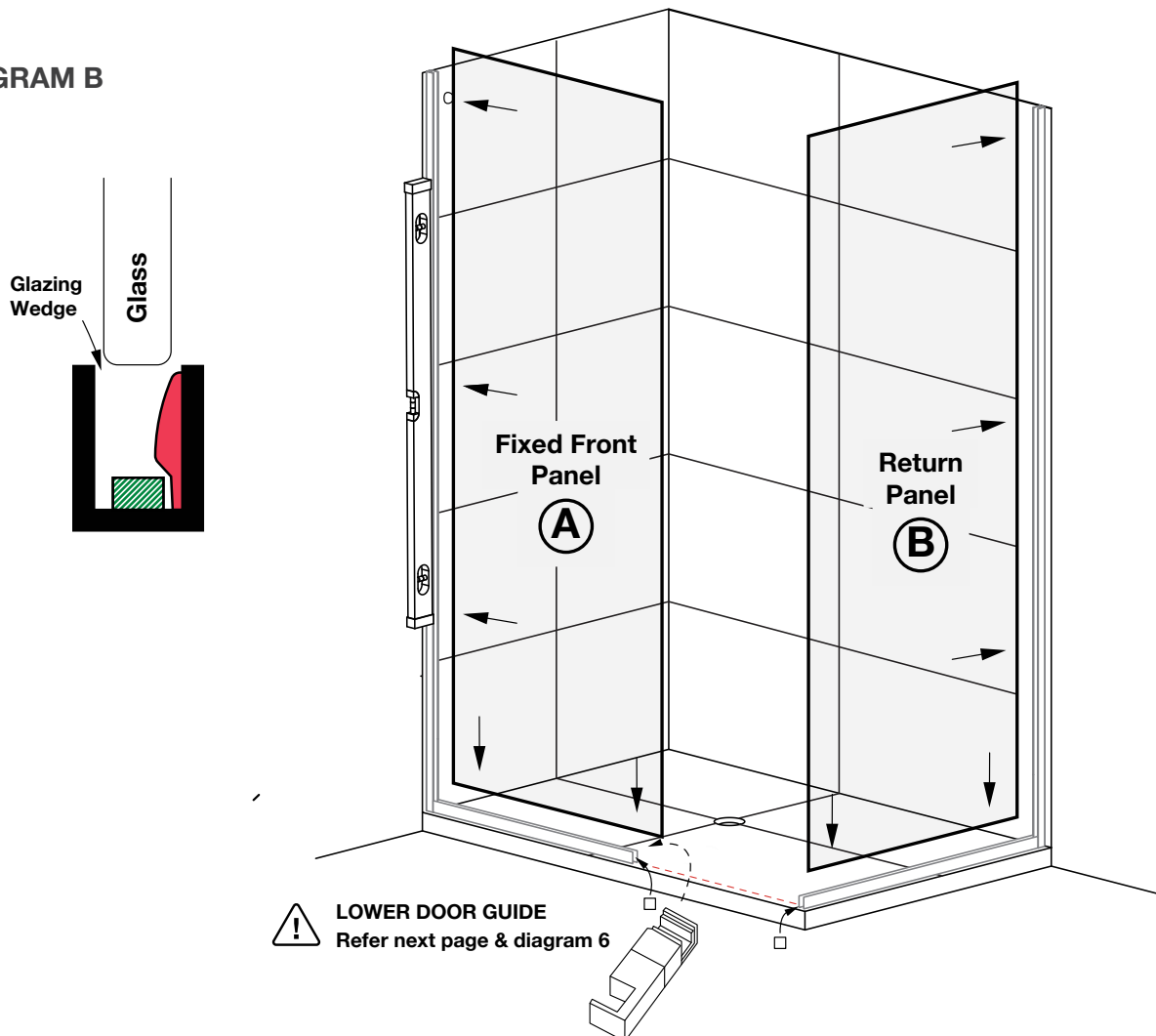
Wall Bracket

Mark position on wall for wall bracket from **Diagram A**. Fasten in place allowing for a slight fall to the opposite side. **Note:** wall bracket offers sideways adjustment also in the slot by rotating it.

Glass Fitting

1. **Fixed Front Panel A:** Place a 5mm packer at outer edge of front fixed panel & pack as needed to level up this panel.
2. **Return Panel B:** Use the fixed front panel as a reference point to level up Return Panel B.

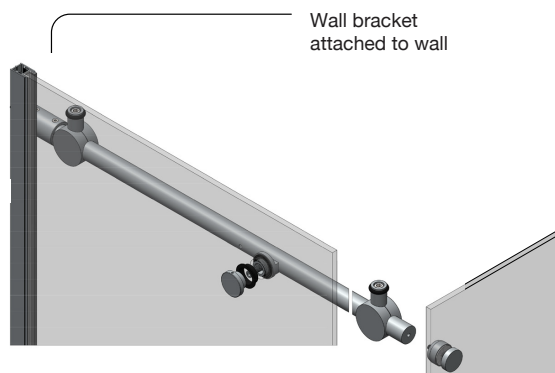
DIAGRAM B



Bonding Glass with channels:

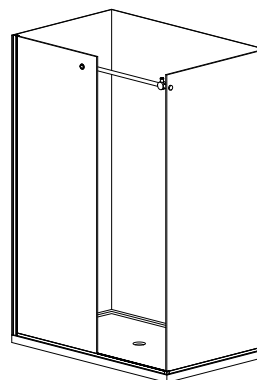
1. Apply bead of structured glazing silicone on inner edge of floor channels as "Diagram B". (Volume of silicone build is important to prevent excess but sufficient to bond & seal)
2. Fit Glass into channels, align glass to floor channel ends as already set-out.
3. Insert 2mm glazing wedge strip into the outside of channel to Glass.
4. Attach end caps to end of floor channels with silicone.
5. Clean up all excess silicone and leave for 48 hours minimum for silicone to cure.

Diagram 1



- Assemble the door top rail complete with stops each end and wall bracket tube.
- Mounting top rail to return panel, fixed front panel and wall mounting

Diagram 2



- **IMPORTANT!** Check the rail has a slight fall down towards the outside of door. D2 (there is adjustment in the base plate slot of the rail mounting).
- Adjustment either vertically or horizontally at the slot in the wall mounting.

Diagram 3

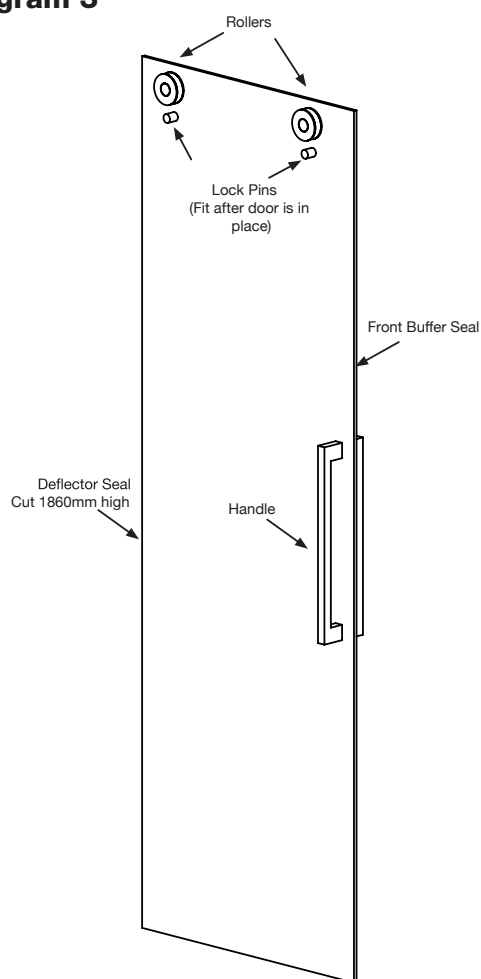


Diagram 4

Rotate as arrows with some weight off door to adjust height.

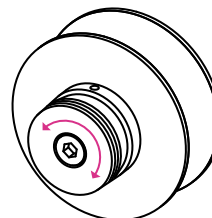


Diagram 5

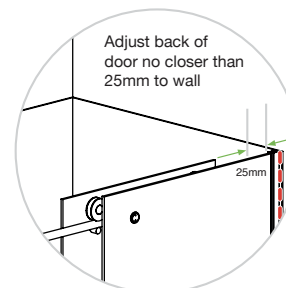
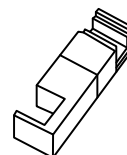
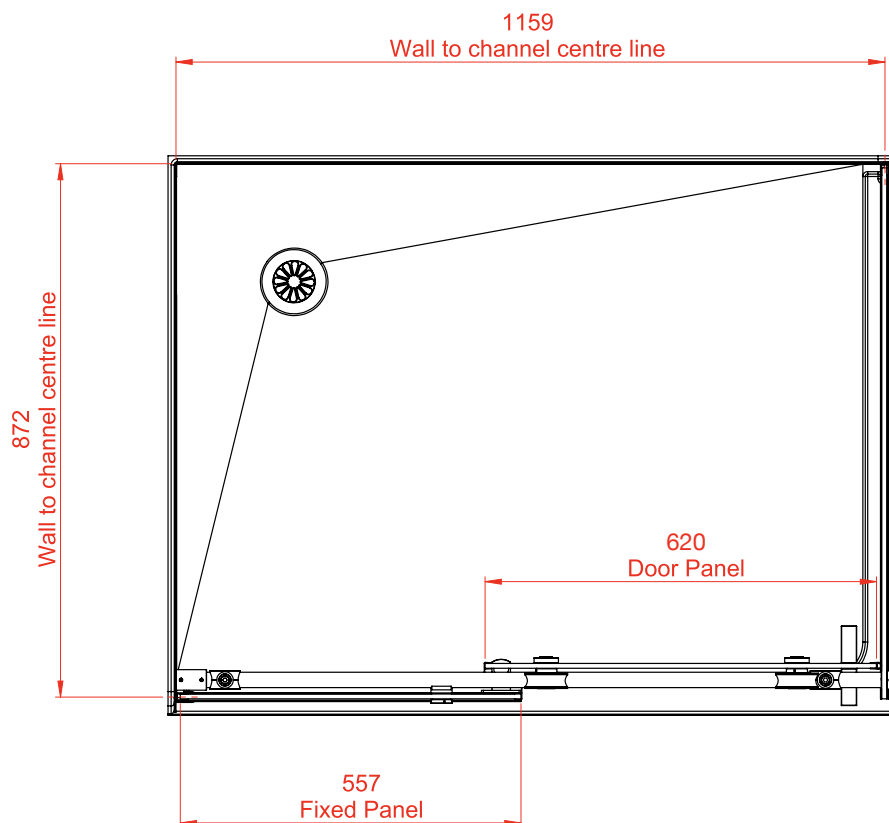
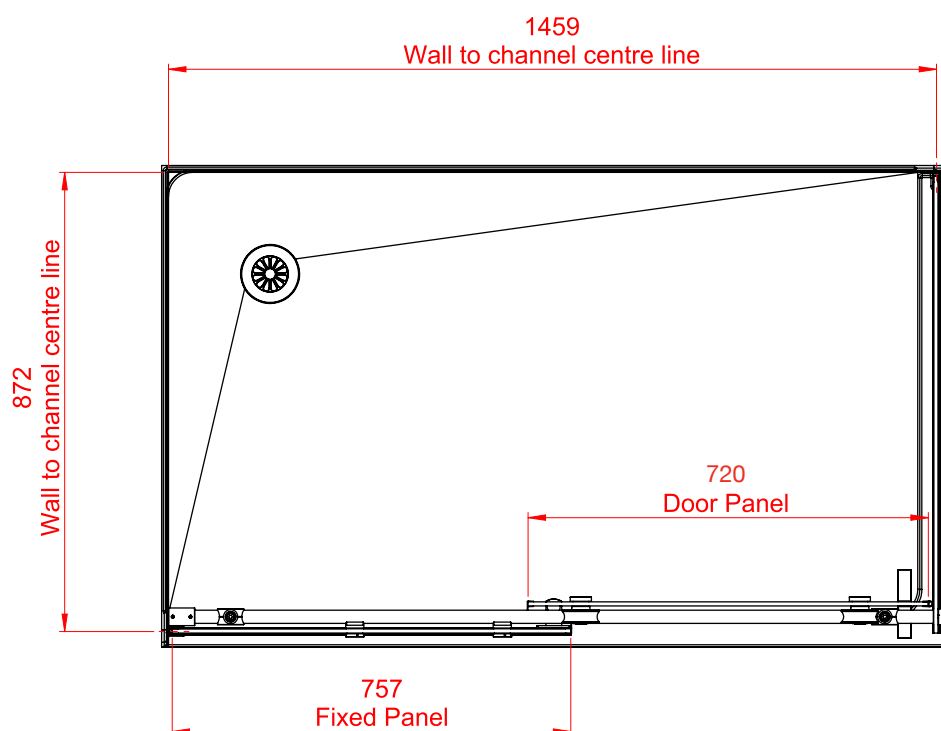


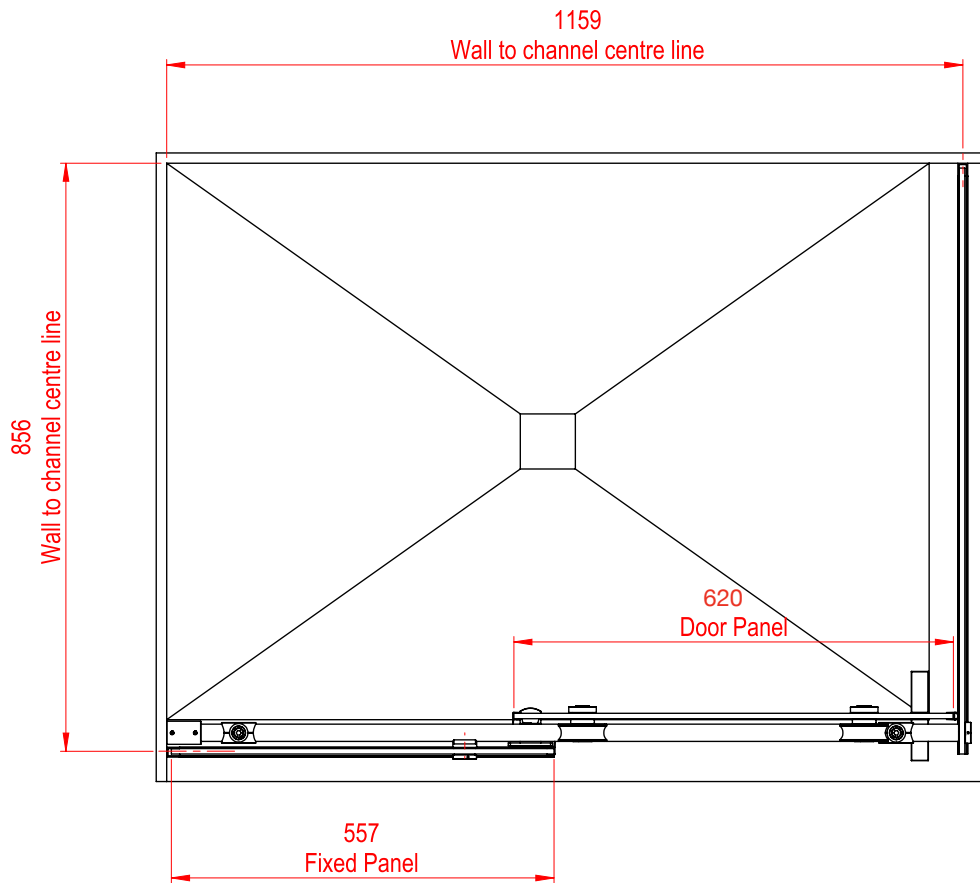
Diagram 6

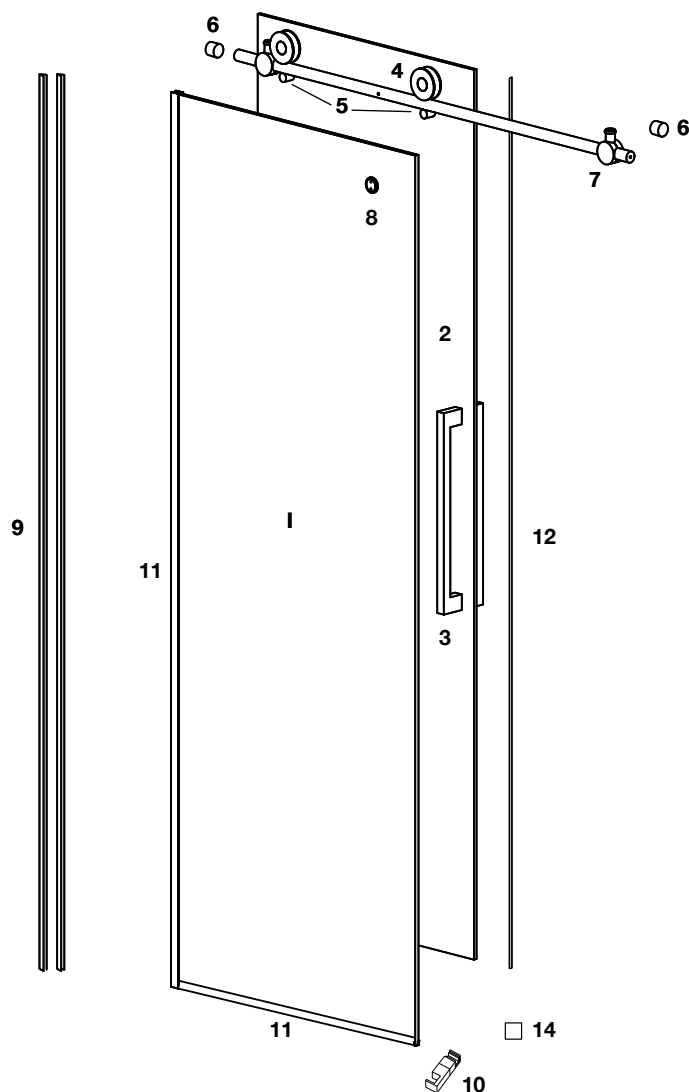
Lower Door Guide installation.

1. The guide is reversible LH to RH. Take it apart at centre by releasing the screw.
2. Screw to floor channel at outside edge.
3. Fasten the guide in place on the inside.



1200mm x 915mm ACRYLIC TRAY**1500mm x 915mm ACRYLIC TRAY**

1200mm x 900mm TILE TRAY



COMPONENTS LIST

REFERENCE	DESCRIPTION	PART NUMBER	QUANTITY
1	Fixed Panel	E7730	1
2	Door Panel	E7839	1
3	Linear Handle 400mm	H5542.**	1
4	Door Wheel	H5658.**	2
5	Lock Knob	H5610.**	2
6	Wall Bracket	H7253.**	2
7	Door Stop	H5634.**	2
9	Deflector Seals	I6112	2
8	Bar Clip	H7239**	1
10	Guide Bracket	H5252.**	1
11	U-Channels (Floor & Wall)	A9085.**	2
12	Buffer Seal	I6105	1
14	End Cap for U-Channel	H708**	1

** - Add colour code, e.g. .CR for Chrome, .BK for Black, .BN Brushed Nickel, .GM for Gun Metal and .BB for Brushed Brass

This Diagram covers Acrylic and Tile installations and guidance.

CENTRE LINE OF GLASS CHANNELS

1. ACRYLIC: 27mm off front edge.

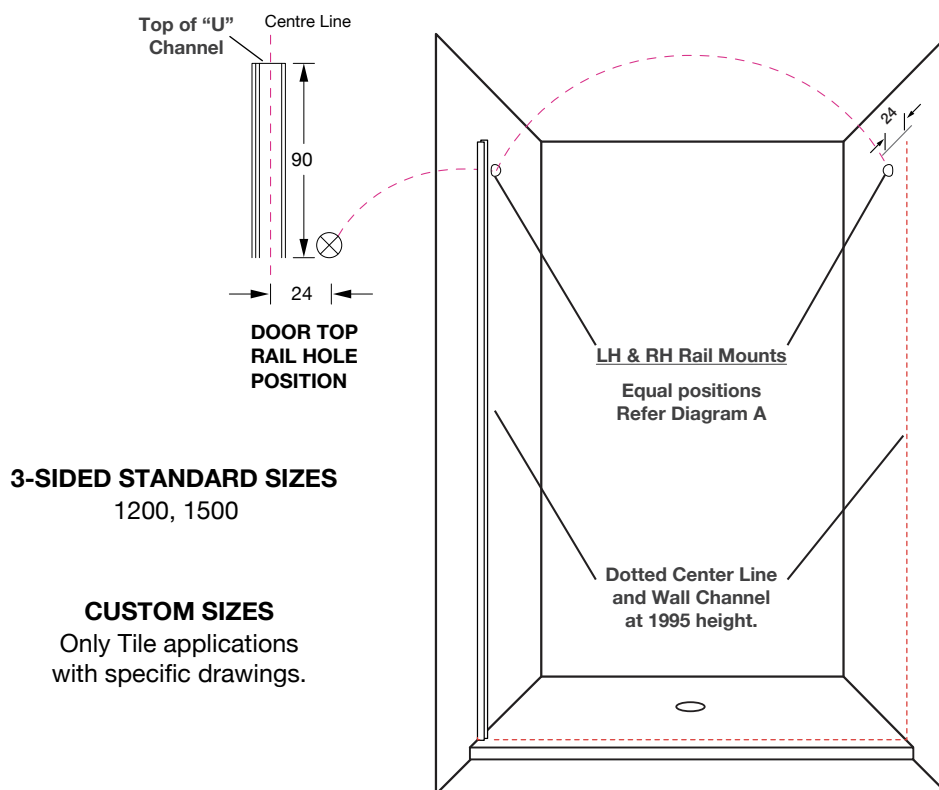
2. TILE (It is assumed that Tiling has included water-stop compliance)

Level Entry: on the tile joint (Where the slope starts and the "Water-Stop" is installed)

Step down: 8mm off step down provided by Water-Stop' insert.

Hob: Centred of hob. (An approved "Water-Stop" must be installed at the outer edge of Hob)

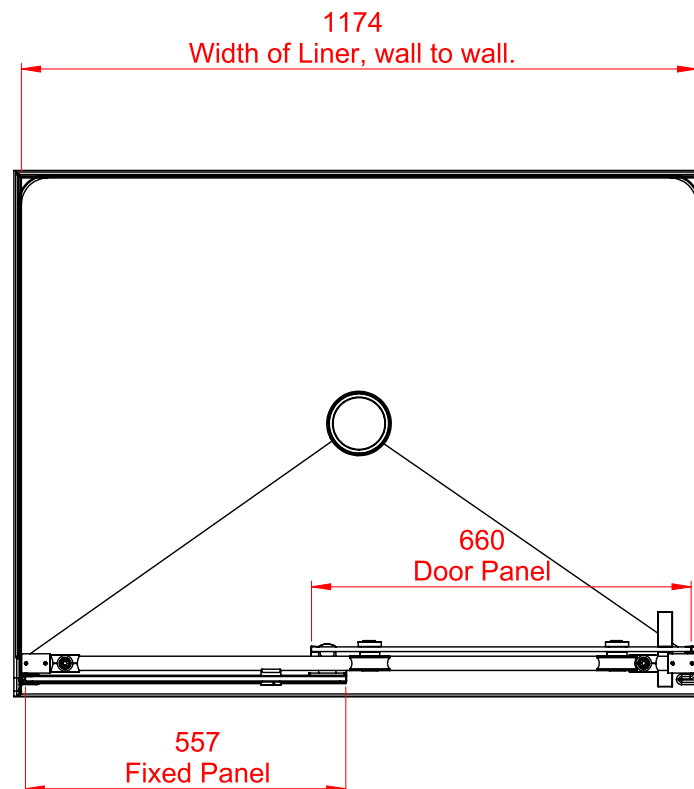
DIAGRAM A



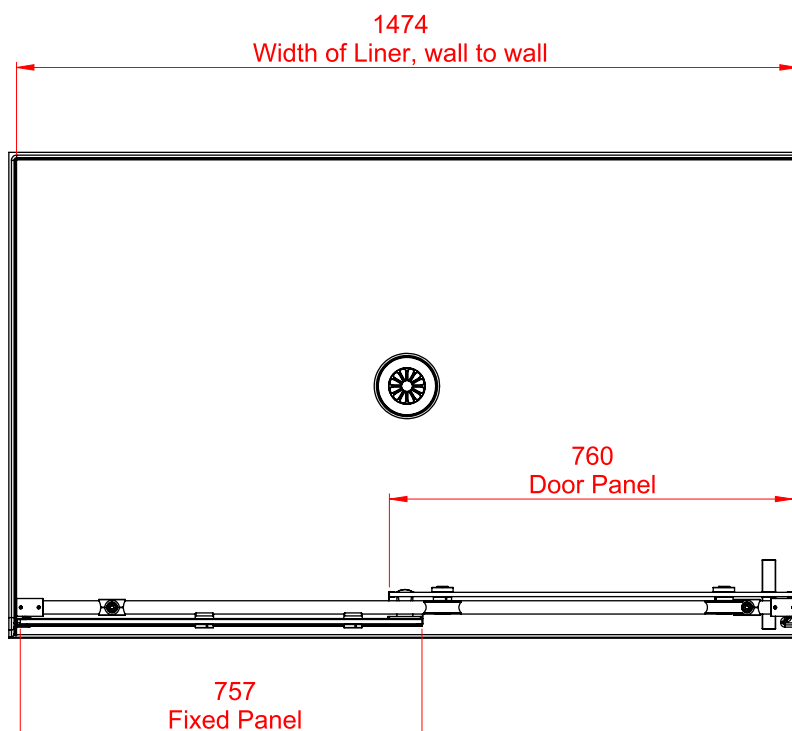
1. Mark the Glass centre line (also channel centre) across the base and up each wall.
2. Mark positions on both walls for the mounting of the top rail bar. Drill these holes and fasten the mounts in place.
4. On the fixed glass side install the channels to floor and wall. Refer to page 4 Acrylic or Tile.
5. Bond glass in channels using details given on page 5 and leave to cure for 48 hours.
6. Fully assemble all items on Rail (Refer Page 6), Attach rail both sides and line up to fastening to fixed glass.
3. **Important!** Check that the rail has a slight fall to stop, adjust mounts in slots to achieve this along with alignment to fixed glass. **Note:** Rail Mount offers sideways adjustment also by rotating it.
7. Finally tighten up allen screws at mounts and fixed glass bracket.

These are condensed steps. All other installation steps can be found in the 2-Sided steps.

1200 ACRYLIC 3-SIDED ALCOVE TRAY



1500mm ACRYLIC 3-SIDED ALCOVE TRAY



CONTACT



54 Unutoto Place, Tauriko, Tauranga, 3171

Freephone: 0508 639 5463 **Phone:** 09 444 2053

Email: info@newline.co.nz **newline.nz**